



Tray chic

Repurpose an old picture frame and serve up a message of love this Mother's Day.

Step by step

YOU WILL NEED:

- | | |
|--------------------------------------|--------------------------------|
| Wooden picture frame | Super glue |
| MDF board (4.75mm thick) | Hammer and pin nails |
| Resene FX Blackboard Paint | Pencil and ruler |
| Sandpaper block | Drill and drill bit |
| Resene testpots (see colours listed) | Two cabinet handles and screws |
| Resene testpot brush | Screw driver |
| Resene FX Paint Effects Medium | Felt |
| | Scissors |

1 Start by removing the glass and backing from your picture frame. If your frame doesn't come with a wood backing, measure and cut a piece of MDF board to fit snugly into the frame where the glass was (A).

2 Paint the board with two to three coats of Resene FX Blackboard Paint, leaving to dry between coats (B). If you'd prefer a coloured finish, Resene FX Chalkboard Paint comes in a variety of colours, but we just love the richness of a black for this project.

3 Sand your frame to remove any old paint and dust, then paint the front side and edges of the frame with two coats of Resene Undercover (C). **4** Once dry, mix 1 part Resene Jet Stream with 2 parts Resene FX Paint Effects Medium. Using a dry Resene testpot brush, lightly dip into the mix and brush long strokes to create a streaky effect (D). Don't overload your brush, as you're trying to create a distressed look – leave enough of the base colour showing through. You can also use an old rag to rub back on areas to help achieve the desired effect. Set aside to dry.

5 Super glue the inside edge of the frame (E) and secure the blackboard backing piece, black side facing down. To make it extra secure, fold back the tabs that normally hold the glass in place, then hammer in pin nails along all the edges, between the tabs (F). It's important that the board is completely secure to hold the weight of a beverage or two.

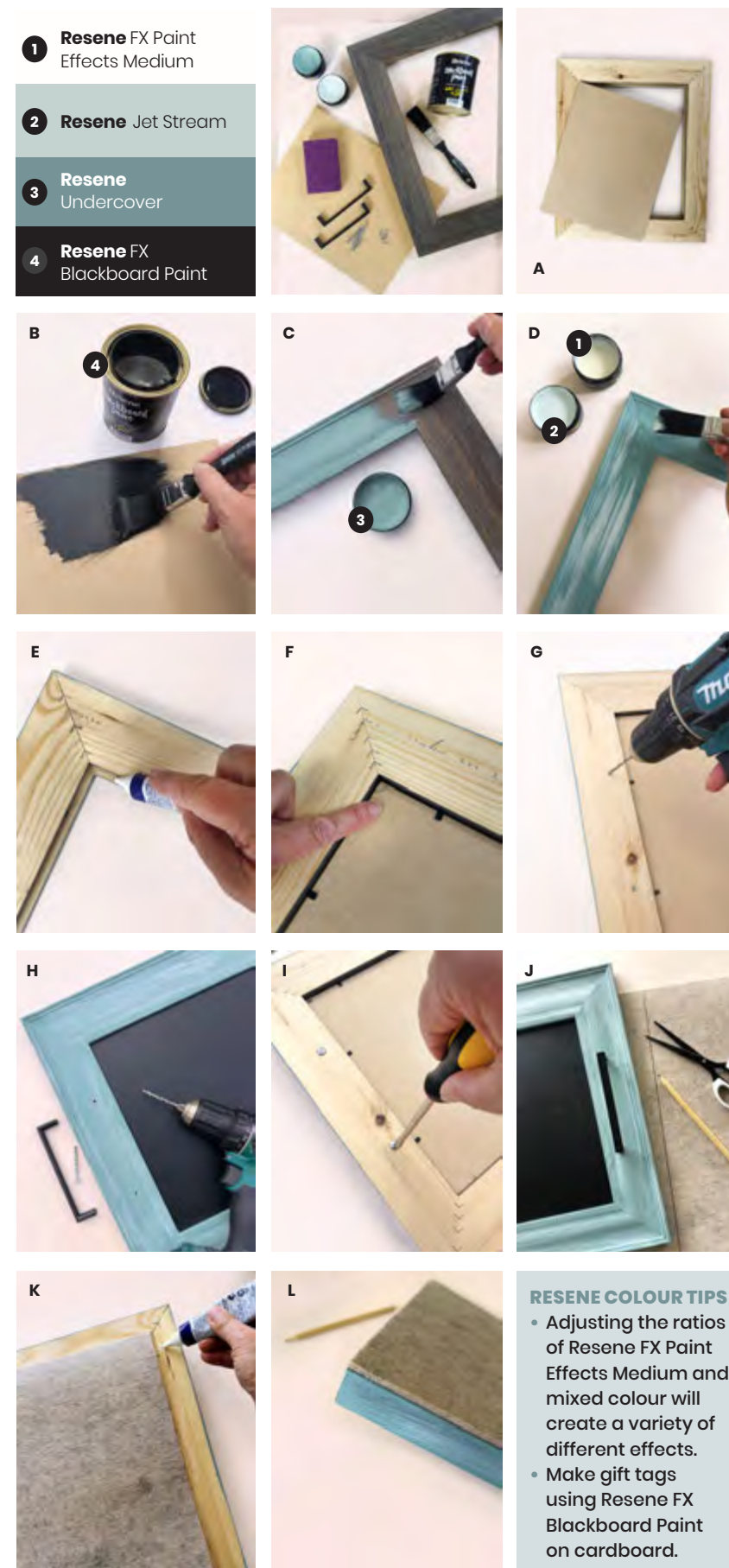
6 Measure and mark on the back side of the frame where your handles need to go, preferably centred on each side. Drill a hole all the way through the frame, large enough for the handle screws to fit (G-H). Using a screwdriver, fix your handles on tightly (I).

7 Measure and cut a piece of felt as the backing to your serving tray (J), then super glue in place (K-L). This will hide all the nails, tabs and screws, and also creates a soft surface that won't scratch or catch on anything.

8 Now go ahead, boil the jug and write a gorgeous message for that special someone.

MOTHER'S DAY SERVING TRAY

- 1** Resene FX Paint Effects Medium
- 2** Resene Jet Stream
- 3** Resene Undercover
- 4** Resene FX Blackboard Paint



RESENE COLOUR TIPS

- Adjusting the ratios of Resene FX Paint Effects Medium and mixed colour will create a variety of different effects.
- Make gift tags using Resene FX Blackboard Paint on cardboard.

NOTE: For best results, choose a frame that's nice and chunky – that way you have plenty of room to fit the handles and showcase your beautiful Resene colours!

Craft editor & stylist: Marsha Smith. This project is not suitable for multiple washes. Vase painted in Resene Soulful, present wrapped in paper painted in Resene Undercover, gift tag made using Resene FX Blackboard Paint. Duvet colour match: Resene Blue Haze.