

Seashell

Scarpa
Flow

Turbo

Geebung

Pizazz

Tangerine

Grenadier

Bright
RedRose Bud
CherryKingfisher
DaisyBlue
GemTory
Blue

Allports

Deep
Sea

Bilbao

Citrus

Bastille

The Aucklander

25 Rutland Street, Auckland Central

The Arts Precinct of central Auckland is gradually evolving, with the top end of Lorne Street to be the next phase. The more pedestrian friendly space in front of the central library will have all new gunmetal grey paving, artworks, seating and lighting to enhance a multi-level streetscape. With the City Art Gallery and the New Gallery adjacent, saluting this with colour seemed appropriate.

The Aucklander, a 15 storey building with 68 apartments, has just been repainted at the age of 12 years, and aims to contribute to this mélange with its new strata of brilliant colour. Against the calcium gleam of Resene Seashell, fourteen sharp brights ascend from fresh green Resene Citrus to the solar brilliance of Resene Turbo. Metaphorically, grass at our feet and the sun high overhead.

These bright colours are anchored by cantilevered balconies given architectural emphasis and weight in gunmetal Resene Scarpa Flow. Blue-black Resene Bastille grounds the street-level façade, and gives silhouette to the vertical ballustrading above. The fire escape on the west side is painted out visually as much as possible in Resene Seashell.

Colour Selection: Rob Cox

Painting Contractor: Andrews Property Services Ltd

Photographer: Rob Cox

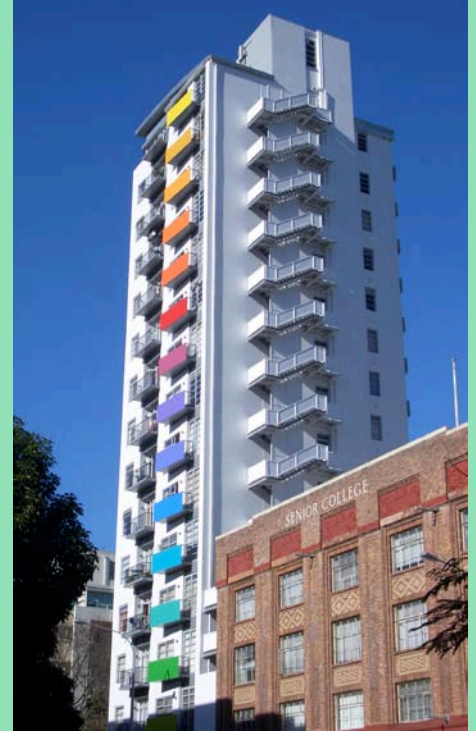
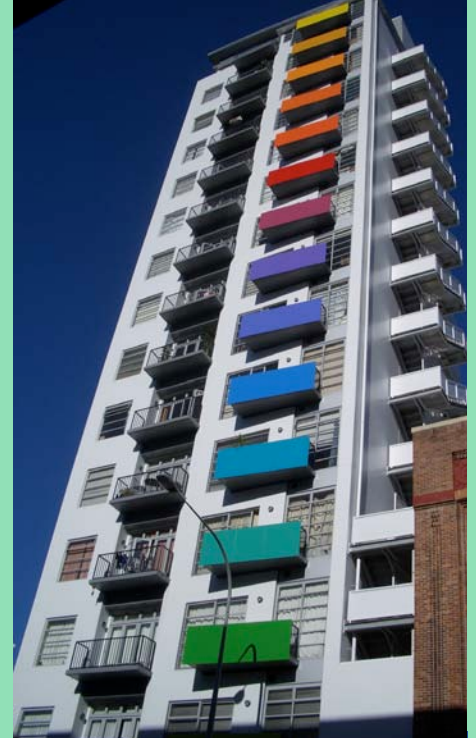
Colours Used: Resene Allports, Resene Bastille, Resene Bilbao, Resene Blue Gem, Resene Bright Red, Resene Citrus, Resene Deep Sea, Resene Geebung, Resene Grenadier, Resene Kingfisher Daisy, Resene Pizazz, Resene Rose Bud Cherry, Resene Scarpa Flow, Resene Seashell, Resene Tangerine, Resene Tory Blue, Resene Turbo

Products Used: Resene decorative paints

When the designer presented the colour proposal to the Body Corporate Committee, there were raised eyebrows followed by focused interest. To treat a building as a background, a take on an abstract modernist artwork was not an approach they had considered, but quickly warmed to. And the boldness of the colour has brought smiles and comments from the occupants, although the inside face of the bright panels is painted in Resene Seashell to maximise light reflectance into the interiors, and to not impose the exterior colour scheme on the individual interiors.

The use of pure colour is often usurped by neutrals, naturals, by ochre and earthen shades and tints. But the idea of creating a beacon of rainbow colours in the Arts Quarter of the city won favour, and proceeded. Feast your eyes and enjoy.

 Resene Zeal



Resene
Total Colour
Awards 2010