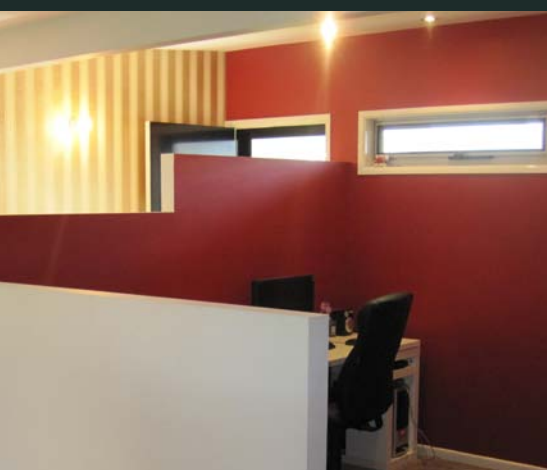
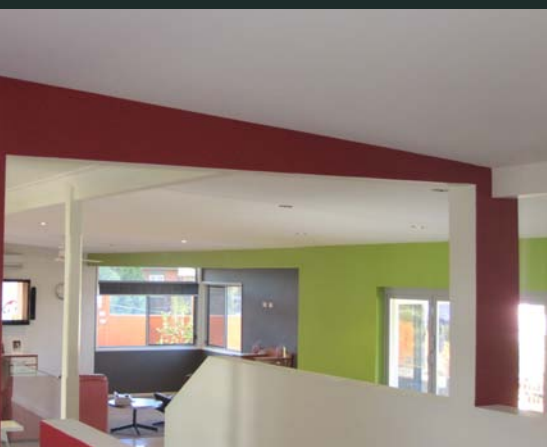
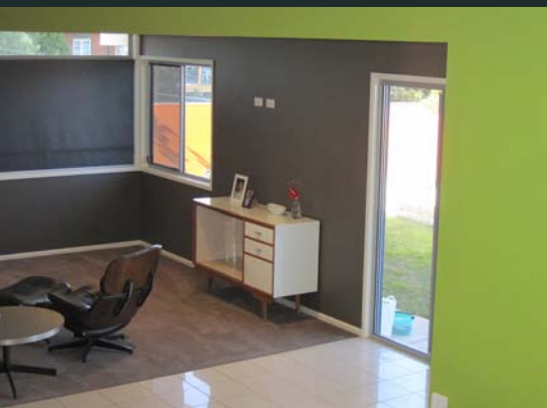


Ashgrove Residence

6 Lone Pine Street, Queensland



The colour scheme is an amendment to a previous monotone scheme. Formerly white hues have been deserted for an injection of colour, not only for appearance but for some division and to change proportion to the internal living areas.

An entry wall has been wallpapered in a richly decadent yellow gold hue with vertical lines complemented by an adjacent study painted in Resene Dynamite. This red is both dramatic and lively yet a warm choice purposely for the intended work area,

The lower level down from the entry is the hub of the home, the kitchen. The kitchen is painted in Resene Limerick.

Green is a personal favourite and links in well with the focus on green living.

A soon to be installed kitchen of white Caesar benches and black lower cupboards will complete the look.

The large home has been enhanced and defined by choices and applications of colour. The below living/dining area overlooks city lights and suburbia and has been painted in Resene Masala. This has been chosen with the intent of its greatest effect at night. The room really seems to disappear into the night sky.

Resene Masala as a choice is flawless; a brown yet grey with a green undertone. A timeless colour to live with.

Dynamite

Limerick

Masala

Building Contractor: DJT Building Pty Ltd
Interior Designer: Karen Kruisdyk-Moore
Painting Contractor: Kruisdyk Painting Services Pty Ltd
Photographer: Karen Kruisdyk-Moore

Colours Used: Resene Dynamite, Resene Limerick, Resene Masala
Products Used: Resene Zylone Sheen