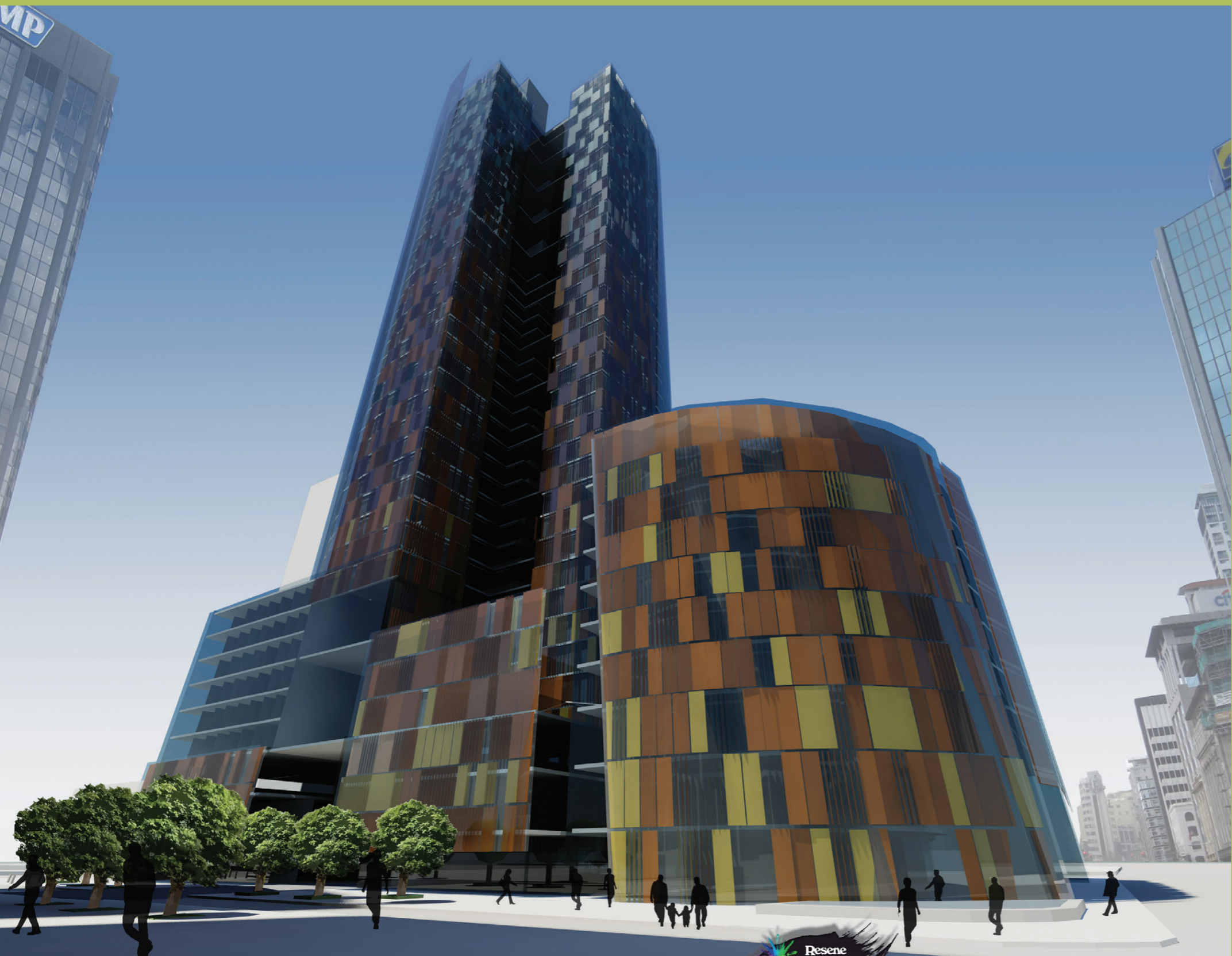




Resene Vermont



Skyscraper and Connectivity

Downtown

The mixed-use skyscraper, positioned in downtown Auckland, focuses on elements which make the high-rise more connective by making it more integrated and interactive with its users and surroundings. The overall design moves away from the contextual and social norms traditionally associated with large buildings.

One key concept of creating a more connective environment is to do with humanising the oversized building. The facade particularity highlights this concept through its series of coloured vertical louvres, which can be controlled by the people occupying the accompanying space. Each set of three opaque glass louvres is coloured with Resene colours so that when pieced together the entire façade creates a constantly changing vibrant display for the downtown area.

Inspired by nature, earthy colours reside near the ground and gradually fade to blues higher up the tower, almost dematerialising the building as it rises. The massive building is broken up through the use of colour and the changeable nature giving the massive building a more human aspect.

Furthermore the exterior colour concept is reflected internally within the building. The colour theme continues through to screening devices in residential 'neighbourhoods' and statement making feature walls in commercial areas. The colour varies throughout the high-rise depending on the position of the floor in the tower. This building demonstrates a brave move by inserting colour and life into built up urban areas and contributes in creating a better living environment for its inhabitants.

Dark Crimson

Desperado

Gold Drop

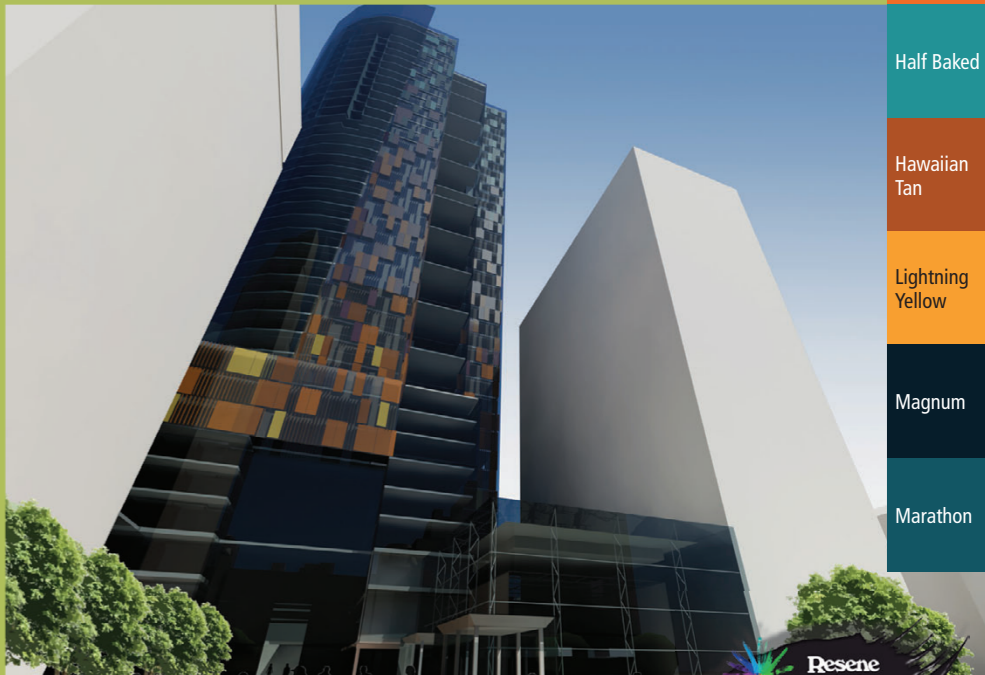
Half Baked

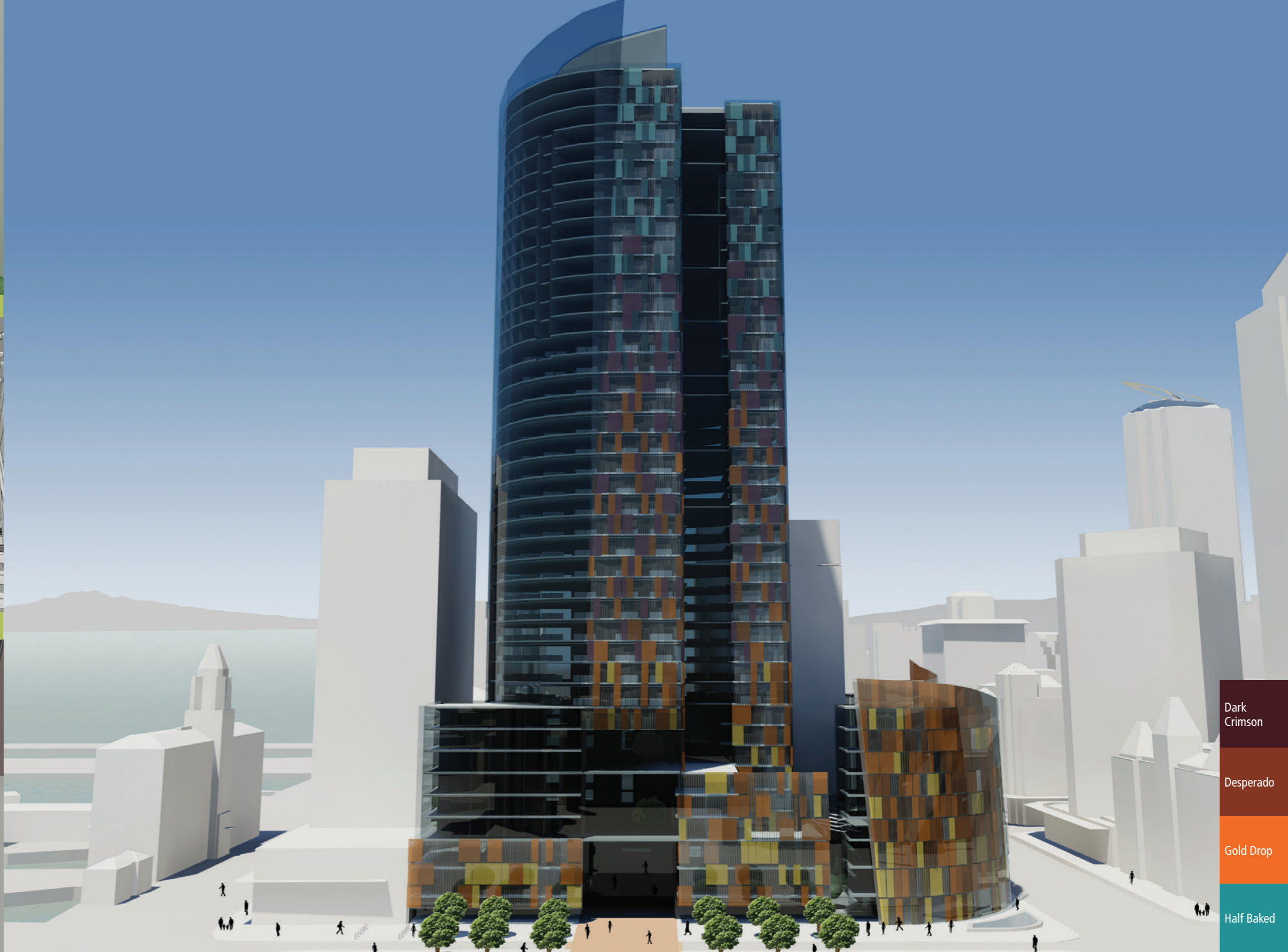
Hawaiian Tan

Lightning Yellow

Magnum

Marathon





- Dark Crimson
- Desperado
- Gold Drop
- Half Baked
- Hawaiian Tan
- Lightning Yellow
- Magnum
- Marathon

Architectural Specifier: Kate Andrew
 Colours Used: Resene Dark Crimson, Resene Desperado,
 Resene Gold Drop, Resene Half Baked, Resene Hawaiian Tan,
 Resene Lightning Yellow, Resene Magnum, Resene Marathon

