



## Resthaven: Memory Enhancement Unit – Sensory Garden Cambridge

Pavlova

Wicked

Hero

Pohutukawa

Spinnaker

Spirulina

The brief required an inviting landscape to connect and stimulate the senses of residents living with dementia. The solution is a vibrant, engaging sensory garden for a 12m x 8m internal courtyard overlooked by a lounge and bedrooms.

The courtyard is primarily a stimulating yet relaxing area for the newly developed Memory Enhancement Unit (MEU). Resthaven is keen to move away from the traditional institutional models of care preferring instead areas that will trigger old memories and feelings, adding value to the resident's life.

The MEU sensory garden stimulates all the senses;

- **Hearing;** birds are encouraged into the garden by the tree, berries and feeder.
- **Touch;** tactile plants which invite touch,

such as lambs ear, grasses.

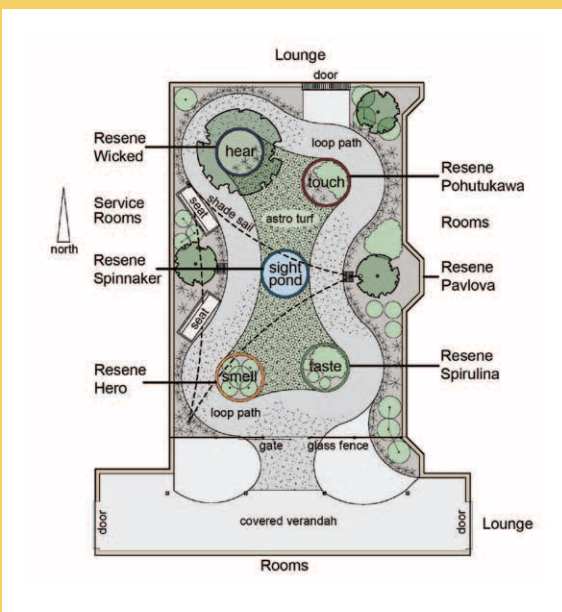
- **Sight;** goldfish in the pond provide an everchanging, eye-catching element. (Feeding the goldfish is also relaxing and a norm for those who have had pets at home.)
- **Taste;** seasonal produce, currently strawberries are growing.
- **Smell;** aromatic gardenia, citrus, lavender and rosemary.

Concrete horse troughs were used for the raised planters and pond ensuring they are at easily accessible heights for the residents. A loop path provides a 'way finding' link through the gardens and pond. Artificial turf was used in place of grass due to the difficulty of accessing the courtyard with a lawnmower.

The walls are finished in Resene X-200

waterproofing membrane tinted to Resene Pavlova on Rockcote Integra panel. The troughs were painted in five different colours that relate to the plants, water and other elements in the surrounds. These colours also brighten the courtyard through all seasons. The troughs feature Resene Wicked, Resene Hero, Resene Pohutukawa, Resene Spinnaker and Resene Spirulina. Resene Lumbersider low sheen waterborne paint was specified for these for its ease of application and coverage over the concrete and its durability in an outdoor situation.

Residents may participate in gardening or seating is provided for those who just wish to sit quietly. Shade is provided by an overhead shade cloth and an adjacent veranda area allows for appreciation of the garden in all weather.



**Architectural Specifier:** Glen Brownlee,  
 Environs Ltd [www.environs.co.nz](http://www.environs.co.nz)  
**Building Contractor:** Livingstone Building Ltd  
[www.livingstonebuilding.co.nz](http://www.livingstonebuilding.co.nz)  
**Colour Selection:** Sheryn Brownlee, Environs Ltd  
**Landscape Design:** Environs Ltd  
**Landscape Contractor:** Form Landscaping  
**Painting Contractor:** Kevin Wanless, Form  
 Landscaping [www.formlandscaping.co.nz](http://www.formlandscaping.co.nz)  
**Photographer:** Tania Samuels, Intec Design