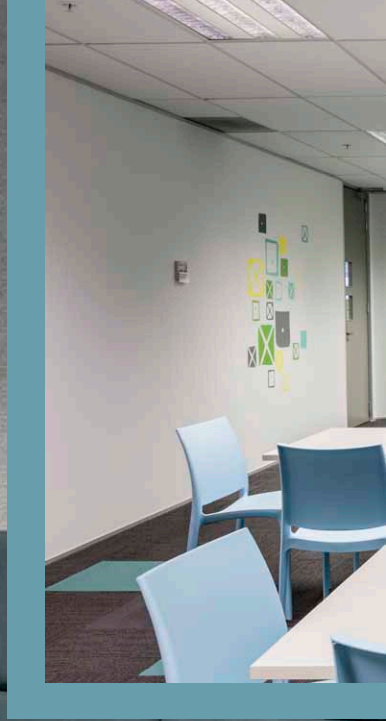


OfficeMax
Hickory Place, Christchurch





OfficeMax is one of the top three office product companies in the world and a market leader in New Zealand with over 36,000 customers. As well as office products, OfficeMax supply over 60% of New Zealand schools with their 'back to school' stationery.

Creative Spaces were engaged to refurbish and re-plan existing commercial office premises in Hornby, which had minor damage due to the Christchurch Earthquake.

This project included both design and project management of the second floor fitout, which involved the extension of the National Call Centre, and refurbishment

of existing sales and breakout areas. The combination of new carpet, lighting, paint selection and custom graphics/decals aid in creating a fresh and revitalised office space.

Working with existing furniture and screens with multiple colours, the aim in selecting the new paint colours and flooring was to choose a neutral backdrop that did not clash with the existing colours in the space. It was also important to create a light and bright atmosphere in contrast to the dark cave-like conditions of the existing fitout.

Resene SpaceCote Low Sheen tinted to Resene Gothic was used as a warm blue feature wall to the breakout area. This,

in conjunction with the chequerboard Aqua carpet tile, provides a vibrant and contemporary space for the 100+ staff to relax and socialise. The carpet specified for the project was Equilibrium II, Rotate & Static with highlights of Solid Foundations, Navy Blue, Light Grey, Mid Grey. The randomised checkerboard effect creates visual interest and contrast. This carpet was complemented with feature walls of Resene Quarter Friar Grey, and doors in Resene Lustacryl semi-gloss waterborne enamel tinted to Resene Stonehenge, a precise stone grey. The general wall colour was Resene Half Sea Fog, a barely there black edged white.

Gothic

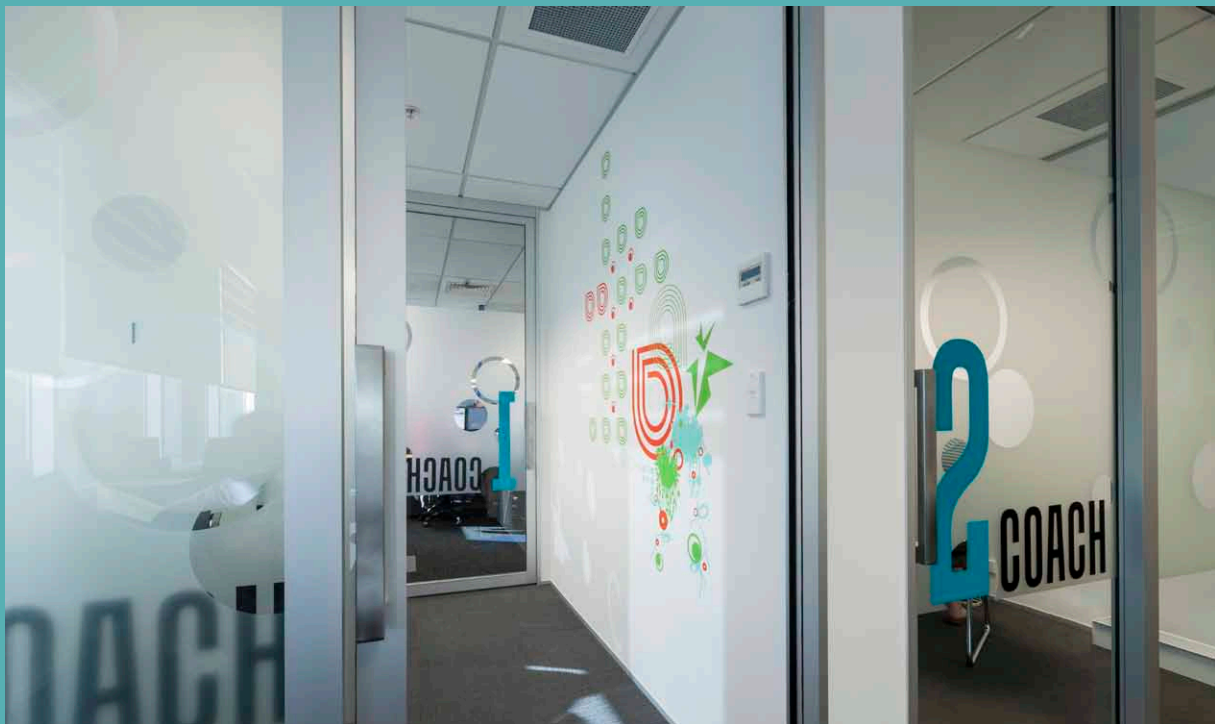
Quarter
Friar Grey

Stonehenge

Half Sea Fog







Architectural Specifier: Creative Spaces Ltd
www.creativespaces.co.nz

Building Contractor: Hawkins Interiors

Painting Contractor: ZG Interiors

Photographer: John Doogan



 Resene Kumutoto

