

Martinborough home

Martinborough

On arrival, this home looks like a small single storey building until you walk through the double-entry portico, then realise that you walk down into the ground floor. Once you enter the lounge, the warmth of the room and its ambience draws you in. The bi-folds can be either partly closed or fully closed to keep the lower floor cosy and the paint colours blend in to the cedar doors. This house was designed to be as energy efficient as possible and is cosy regardless of the winter conditions outside.

The aim was to create a warm and inviting environment, with colours used to express this effect through the house. It's a colour scheme with soul. The lower lounge has a huge bookcase, home to a wide collection

of books, with **Resene X-Factor** providing a striking contrast behind the dark timber shelving. **Resene X Factor** has also been used as an accent in other spaces.

Bedroom 2, warm in summer, needed a cooler colour. This room has a lovely Hunt landscape that is complemented well with the cool tone of **Resene Emerge**.

A rug in bedroom 1 inspired the colour palette of **Resene Tempo** to liven up **Resene Double Taupe Grey**.

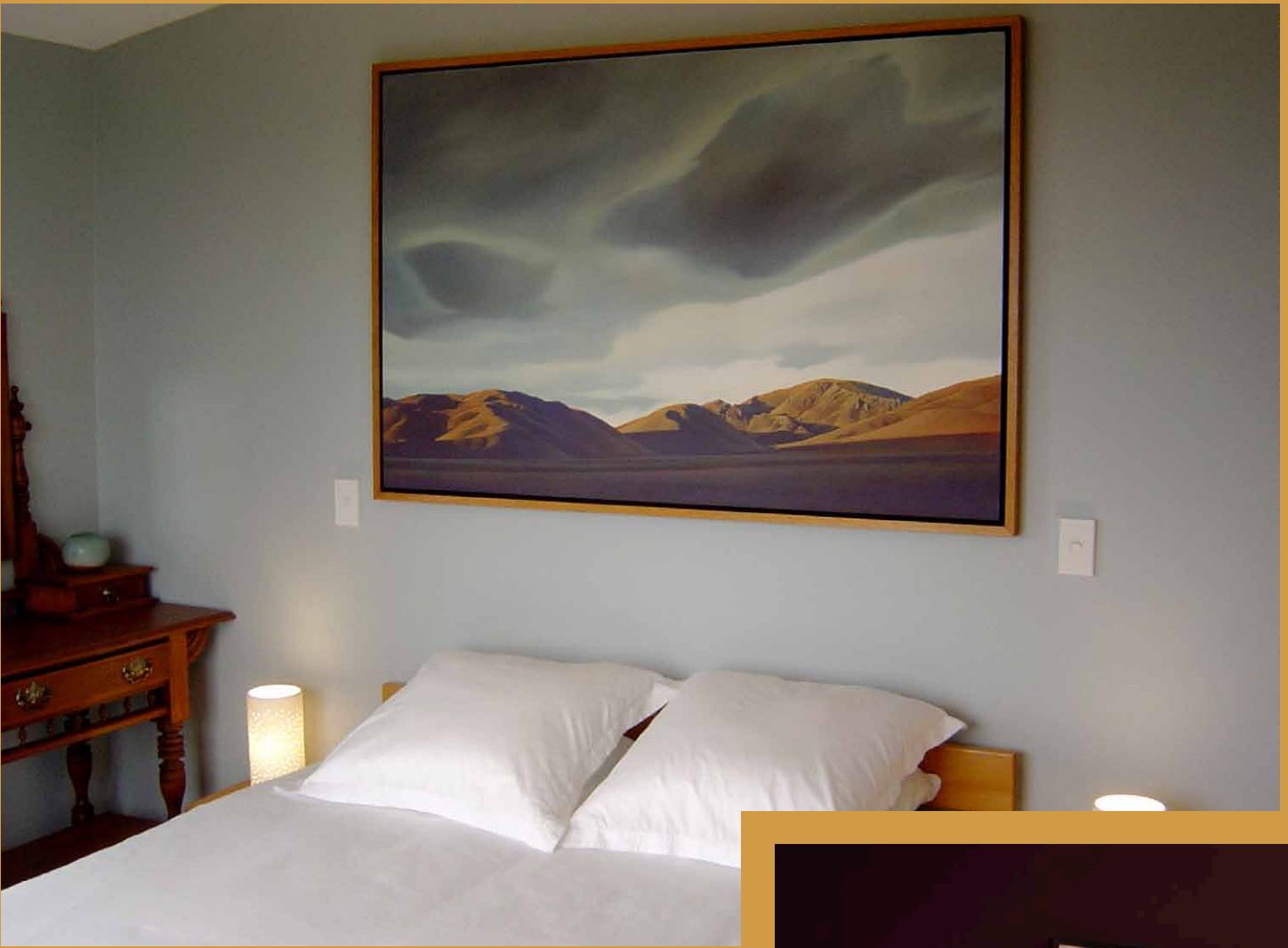
Bedroom 3 is finished in **Resene Half Sisal**, the office in **Resene Quarter Delta** and bathrooms in **Resene Double Taupe Grey**.

All of these work well with the general wall colour of **Resene Quarter Delta**, which strikes the right balance between

being cool and warm to work with all the seasons. Downstairs walls are predominantly skimmed plaster over concrete blocks. The upper floor walls are painted plasterboard complemented by tiled areas. **Resene SpaceCote Low Sheen** is used for most interior areas complemented by **Resene Lustacryl** semi-gloss waterborne enamel.

Outside the walls needed to cope with high winds and harsh environmental conditions. These are now finished in **Resene Lumbersider CoolColour** tinted to **Resene Masala**.

While the home is finished, there is always work to do growing and harvesting the olives that grow on the site.



Resene Bittersweet





Architectural specifier: Mark Trafford
www.trafforddesign.co.nz

Colour selection: Mark Trafford and Marilyn McHaffie
www.trafforddesign.co.nz

