



Use tongue and groove landscaping timber and fence palings to create this stylish mini deck.

★★★ Difficulty level ★ easy ★★ moderate ★★★ challenging

Ways with wood
with Mark Rayner – 91

You will need:

- Tongue and groove landscaping timber cut to the following sizes.
 - 1800mm (x5)
 - 1000mm (x8)
 - 910mm (x2)
 - 1800mm fence palings (x7)
 - 50mm x 50mm x 910mm treated timber (x2)
- 65mm exterior screws
- 100mm exterior screws
- Decking nails
- Fence capping (approx 4m)
- Hammer
- Paint stirrer
- Paintbrush
- Pencil
- Resene Woodsman wood oil stain tinted to Resene Heartwood
- Tape measure
- Turps for washing brush
- Saw
- Screwdriver
- Spade
- Spirit level



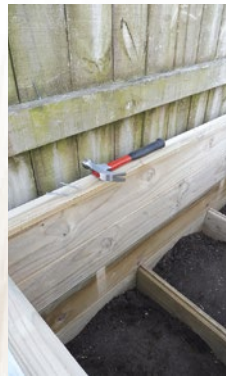
Step 1
Measure, mark and cut the tongue and groove landscaping timber to the lengths listed above.



Step 2
Construct the base of the deck, as shown, using two 1800mm lengths, two 1000mm lengths and two 910mm lengths of tongue and groove landscaping timber, fixing with 100mm screws. Use a spirit level to ensure the base is level.



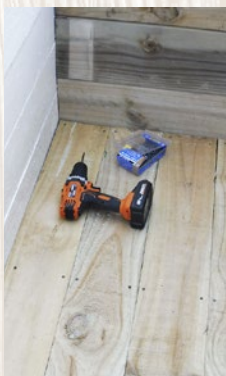
Step 3
Build up the sides of the deck, as shown, using the remaining 1800mm lengths and 1000mm lengths of tongue and groove landscaping timber. Again, fix with 100mm screws.



Step 4
Measure, mark and cut the fence capping to fit along the sides of the deck and fix into position with decking nails.



Step 5
Attach the two 50mm x 50mm x 910mm pieces of timber at either end of the deck base, as shown, ensuring they are flush with the other central supports. Fix with 100mm screws drilled in at an angle.



Step 6
Lay the fence palings in position and fix with 65mm screws. Measure, mark and cut the final fence paling to fit.



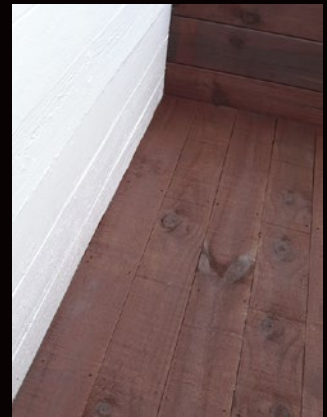
Step 7
Carefully stir the Resene Woodsman tinted to Resene Heartwood.



Step 8
Apply two coats of Resene Woodsman tinted to Resene Heartwood to the whole structure allowing 24 hours for each coat to dry. Wash brush with mineral turps.



To get the look:
Mark painted the adjoining shed wall with Resene Lumbersider tinted to Resene Half Dutch White.



Other ideas:
For a rich red look stain the mini deck with Resene Woodsman tinted to Resene Cherrywood.

For more ideas and inspiration visit your local Resene ColorShop or www.resene.com/colorshops.

Check out more project ideas online www.resene.com/projects.