

★★★ Difficulty level ★ easy ★★ moderate ★★★ challenging

Ways with wood  
with Mark Rayner – 42

### You will need:

- 20mm plywood cut to the following dimensions:  
330mm x 500mm (base)  
330mm x 280mm (sides)  
500mm x 250mm (front and back)  
9mm plywood cut to 330mm x 496mm (lid)
- 30mm x 10mm timber moulding cut to 340mm (x2)
- 20mm x 10mm timber moulding cut to 536mm, 475mm, and 170mm
- 10mm x 10mm timber moulding cut to 290mm (x2)
- 40mm panel pins
- 16mm craft pins
- Hammer
- Paintbrush
- Paint stirrer
- Pencil
- PVA glue
- Resene Aquaclear satin
- Resene Colorwood Enhance white
- Sandpaper
- Saw
- Set square
- Tape measure



#### Step one

Measure, mark and cut the plywood and timber moulding to the above dimensions and lengths. Smooth any rough edges with sandpaper.



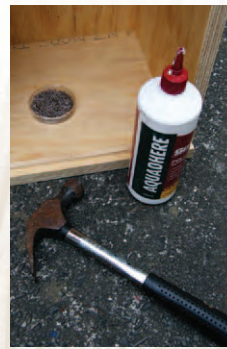
#### Step two

Attach the front and back sections to the base, as shown, fixing in place with panel pins and PVA glue.



#### Step three

Attach the side sections into position, as shown, fixing with panel pins and PVA glue.



#### Step four

Attach the 10mm x 10mm pieces of moulding to the inside of each side piece, as shown, ensuring each end is flush with the front and back sections. Fix with craft pins and PVA glue.



#### Step five

Attach the longest piece of 20mm x 10mm moulding along the back edge, as shown, ensuring the ends are flush with the sides. Fix with panel pins, craft pins and PVA glue.



#### Step six

Attach the next longest piece of 20mm x 10mm moulding at right angles to the back edge and the two lengths of 30mm x 10mm moulding along the side edges, as shown, and fix with panel pins, craft pins and PVA glue. Attach the last piece of 20mm x 10mm moulding to the lid to form a handle.



#### Step seven

Mix the Resene Colorwood Enhance into the Resene Aquaclear and stir thoroughly with a paint stirrer.



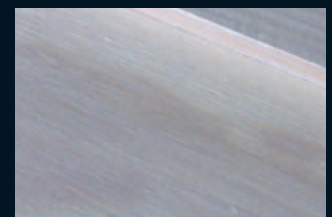
#### Step eight

Apply two coats of the coloured Resene Aquaclear to the box and lid, allowing two hours for each coat to dry. Slide the lid into position.



### To get the look:

Mark painted the background wall with Resene Spacecote Flat tinted to Resene Nero and the table top with Resene Enamacryl tinted to Resene Half Alabaster.



### Other ideas:

For a shiny dark effect use Resene Colorwood Enhance black mixed with Resene Aquaclear gloss.

For more ideas and inspiration visit your local Resene ColorShop or the Resene website.