

★★★ Difficulty level ★ easy ★★ moderate ★★★ challenging Fun with furniture with Mark Rayner – 26

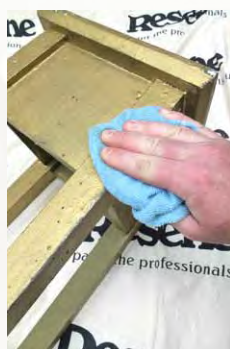
You will need:

- Damp cloth
- Old wooden stool
- Old paintbrush
- Paintbrush
- Patterned fabric
- Piece of paper
- Pencil
- PVA glue
- Resene Lustacryl tinted to Resene
- Panorama and Resene Quarter Black White
- Sandpaper
- Scissors



Step one

Wash the paintwork of the wooden stool, if necessary, and lightly sand to 'key' the surface.



Step two

Wipe off any sanding residue with a damp cloth and allow to dry.



Step three

Apply one coat of Resene Panorama to the underside and legs of the stool and allow two hours to dry.



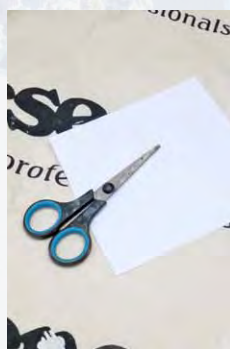
Step four

Apply a second coat of Resene Panorama to the underside and legs of the stool and allow two hours to dry.



Step five

Apply two coats of Resene Quarter Black White to the sides and top of the stool, allowing two hours for each coat to dry.



Step six

Using the pencil and scissors, mark and cut out a paper template to the same size as the side of the stool.



Step seven

Using the template as a guide cut out four pieces of fabric to this size.



Step eight

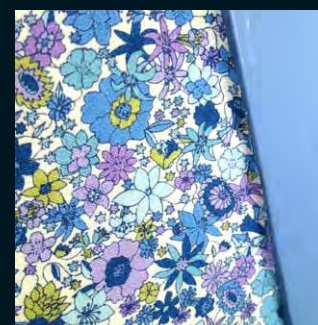
Apply a layer of PVA to one of the sides using an old paintbrush and carefully place a piece of fabric in position, smoothing out any creases. Repeat for the remaining three sides of the stool and allow glue to dry.

Turn an old painted wooden stool into a crafty display stand with a little bit of help from Resene.



To get the look:

Mark painted the background wall with Resene SpaceCote Flat tinted to Resene Black White.



Other ideas:

To create a display stand for a child's bedroom, paint with Resene Rocket and Resene Alabaster, and glue cut-out cartoon pictures from comics to each side.

For more ideas and inspiration visit your local Resene ColorShop or www.resene.co.nz or www.resene.com.au.

Check out our special Artists section online www.resene.co.nz/artists/artists_canvas.htm or www.resene.com.au/artists/artists_canvas.htm.