

★☆☆ Difficulty level ★easy ★★moderate ★★★challenging

Resene art with Mark Rayner – 11

### You will need:

- Green towel or piece of fabric
- Plastic mannequin torso
- Paintbrush and small paint roller/tray
- Red glitter
- Resene Enamacryl Metallic tinted to Resene Adrenalin Junkie
- Resene Lumbersider tinted to Resene Old Brick
- Resene Multishield+ gloss
- Resene Sandtex Mediterranean effect
- Resene Waterborne Smooth Surface Sealer
- Sandpaper
- Small table



**Step one**  
Lightly sand the mannequin to provide a 'key' to the surface – this will help the sealer to adhere.



**Step two**  
Apply one coat of Resene Waterborne Smooth Surface Sealer to the mannequin. Allow to dry.



**Step three**  
Using an old paintbrush and 'stippling' technique, apply one coat of Resene Sandtex Mediterranean effect to the mannequin. Allow to dry.



**Step four**  
Apply two coats of Resene Old Brick to the mannequin. Allow to dry.



**Step five**  
Using a small roller, apply two coats of Resene Adrenalin Junkie to the mannequin. Allow to dry.



**Step six**  
Mix two small pots of red glitter with some Resene Multishield+ gloss and apply three coats to the mannequin, allowing two hours to dry between coats.

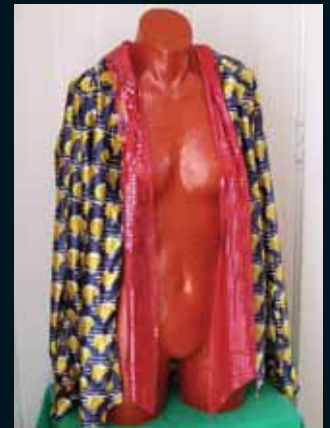


**Step seven**  
Cover the small table with the green towel or piece of fabric.



**Step eight**  
Once the mannequin is fully dried (preferably overnight) position on the plinth.

Create a cool clothes stand with a mannequin torso and Resene metallic paint.



### To get the look:

Mark painted the background woodwork with Resene Enamacryl tinted to Resene White Linen.



### Other ideas:

For a really sumptuous look try using Resene Enamacryl Metallic tinted to Resene Bullion.

For more ideas and inspiration visit your local Resene ColorShop or [www.resene.co.nz](http://www.resene.co.nz) or [www.resene.com.au](http://www.resene.com.au).

Check out our special Artists section online [www.resene.co.nz/artists/artists\\_canvas.htm](http://www.resene.co.nz/artists/artists_canvas.htm) or [www.resene.com.au/artists/artists\\_canvas.htm](http://www.resene.com.au/artists/artists_canvas.htm).