

You will need:

- Bowl shaped terracotta plant pot
- Exterior construction glue
- Paintbrushes (including an artists' brush)
- Plastic solar garden light
- Resene Enamacryl Metallic tinted to Resene Copper Fire
- Resene Multishield+ gloss
- Resene Sandtex Mediterranean effect
- Resene Terracotta Sealer
- Resene Testpot of Resene El Salva
- Resene Waterborne Smooth Surface Sealer
- Sandpaper



Step one

Apply one coat of Resene Terracotta Sealer to the inside and outside of the terracotta plant pot and allow to dry for six hours.



Step two

Remove the garden light from its base and lightly sand the upper plastic casing to provide a 'key' to the surface, taking care not to damage the solar panel.



Step three

Using a small artists' brush, apply one coat of Resene Waterborne Smooth Surface Sealer to the casing on the garden light – again take care not to damage the solar panel. Allow to dry for two hours.



Step four

Using a stippling (light dabbing) technique, apply one generous coat of Resene Sandtex to the casing on the garden light and outside of the terracotta pot. Allow to dry for two hours.



Step five

Apply two coats of Resene El Salva to the casing on the garden light and outside of the terracotta pot, allowing two hours for each coat to dry.



Step six

Using a stippling (light dabbing) technique, apply two coats of Resene Copper Fire to the casing on the garden light and outside of the terracotta pot, allowing two hours for each coat to dry.



Step seven

Apply one coat of Resene Multishield+ to the casing on the garden light and outside of the terracotta pot. Allow to dry for two hours.



Step eight

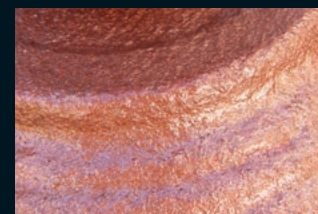
Place the base 'spike' of the garden light through the hole in the base of the terracotta pot, as shown, fixing in position with a blob of exterior construction glue.

This cool copper garden light is the perfect addition to your summer barbeque.



To get the look:

Mark painted the background wall with Resene Sandtex Mediterranean effect tinted to Resene Time Out.



Other ideas:

Create a shimmering blue metallic effect using a basecoat of Resene Heather and two topcoats of Resene Scotty Silver.

For more ideas and inspiration visit your local Resene ColorShop or www.resene.co.nz or www.resene.com.au.

Check out our special Artists section online www.resene.co.nz/artists/artists_canvas.htm or www.resene.com.au/artists/artists_canvas.htm.