



★★★ Difficulty level ★easy ★★moderate ★★★challenging

Resene art with Mark Rayner – 27

Create a kitsch retro-looking artwork by painting on black velvet with Resene paints.

You will need:

- Damp cloth
- Dressmakers' chalk
- Piece of black velvet
- Paintbrushes (including artists' brushes)
- Photograph to copy (we used a picture of a dog)
- Picture frame with old picture
- Resene Lumbersider tinted to Resene Nero
- Resene Multishield+ flat
- Resene Testpots in Resene Alabaster, Resene Brown Pod, Resene Cumin and Resene Porsche
- Resene Waterborne Smooth Surface Sealer
- Sandpaper
- Scissors



Step one

Lightly sand the entire frame and backing picture to provide a 'key'.



Step two

Apply one coat of Resene Waterborne Smooth Surface Sealer to the frame and picture and allow to dry for two hours.



Step three

Apply two coats of Resene Nero to the frame and allow two hours for each coat to dry.



Step four

Use the scissors to cut a piece of black velvet to fit inside the frame. Apply one generous coat of Resene Multishield+ to the backing picture.



Step five

Immediately place the black velvet into position in the frame and gently press down onto the wet Resene Multishield+ - this will act as a glue, bonding the velvet to the backing board. Allow to dry for two hours.



Step six

With the dressmakers' chalk carefully draw an outline of a dog using the photograph as a guide.



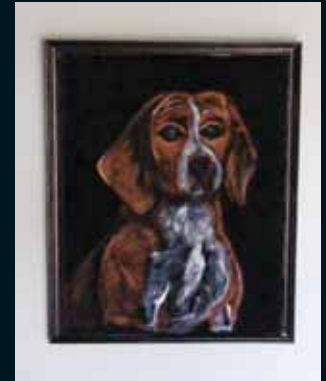
Step seven

Using a stiff bristled artists' brush, use Resene Cumin, Resene Brown Pod and Resene Alabaster to paint in the fur - take care not to apply the paint too thickly as you want some of the velvet to show through.



Step eight

Continue painting the head with the same colours, using Resene Nero and Resene Alabaster to add details to the eyes and Resene Porsche to build up highlights to the fur and ears. Once finished, allow to dry for two hours and carefully wipe off any remaining chalk lines with a slightly damp cloth.



To get the look:

Mark painted the background wall with Resene SpaceCote Low Sheen tinted to Resene Black White.



Other ideas:

Look at kitsch 1950s art and design for further inspiration, such as a cool lounge tiki design or a velvet masterpiece inspired by Tretchikoff.

For more ideas and inspiration visit your local Resene ColorShop or www.resene.co.nz or www.resene.com.au.

Check out our special Artists section online www.resene.co.nz/artists/artists_canvas.htm or www.resene.com.au/artists/artists_canvas.htm.