

It's easy to use Resene
Crackle effect to
create this fabulous
piece of abstract art.

★★★ Difficulty level ★ easy ★★ moderate ★★★ challenging

Resene art with Mark Rayner – 68

You will need:

- Artists' canvas
- Resene Crackle effect
- Resene Quick Dry
- Resene testpot brush
- Resene testpots of Resene Dreamer and Resene Surfs Up
- Resene testpot roller and tray



Step one

Apply one coat of Resene Quick Dry to the canvas using the roller and allow two hours to dry.



Step two

Apply one coat of Resene Dreamer to the canvas using the roller and allow two hours to dry.



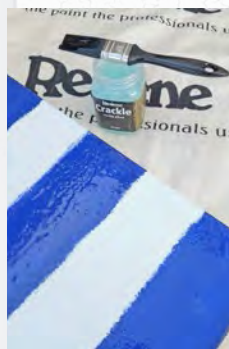
Step three

Apply a second coat of Resene Dreamer to the canvas using the roller and allow two hours to dry.



Step four

Use the roller to paint three equal stripes across the canvas with Resene Surfs Up. Allow two hours to dry.



Step five

Brush one generous coat of Resene Crackle effect onto the canvas and allow to dry.



Step six

Apply one coat of Resene Dreamer over the darker stripes and allow to dry.



Step seven

Apply one coat of Resene Surfs Up over the paler stripes and allow to dry.



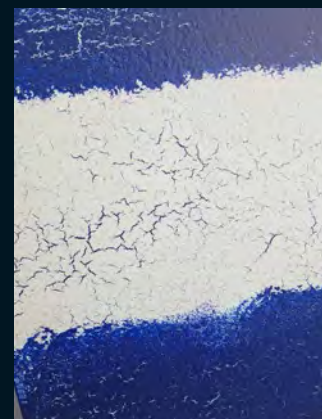
Step eight

Apply two coats of Resene Surfs Up to the edge of the canvas, allowing two hours for each coat to dry.



To get the look:

Mark painted the background wall with Resene SpaceCote Flat tinted to Resene Rice Cake.



Other ideas:

For maximum contrast try a monochrome combination of Resene Alabaster and Resene Black.

For more ideas and inspiration visit your local Resene ColorShop or www.resene.co.nz or www.resene.com.au.

Check out our special Artists section online www.resene.co.nz/artists/artists_canvas.htm or www.resene.com.au/artists/artists_canvas.htm.