

# Faux mosaic table



Get crafty with this cleverly painted tabletop.

## You will need:

- Old wooden table
- Sandpaper
- Resene Quick Dry Acrylic Primer Undercoat
- Resene Lumbersider in Resene Blackcurrant, Resene Nero, Resene

- Blue Bell, Resene Studio, Resene Lilac Bush, Resene Blue Diamond
- Resene Multishield+ Gloss
- Saucepan lids, bowls, glasses
- Chalk
- Paintbrush
- Artist's brush



For more on paints  
phone 0800 RESENE  
or visit [www.resene.co.nz](http://www.resene.co.nz)



1

LIGHTLY sand the table and prime with one coat of Resene Quick Dry Acrylic Primer Undercoat. Allow to dry.



2

PAIN'T the top of the table with two coats of Resene Nero and the sides and legs with two coats of Resene Blackcurrant. Allow to dry.



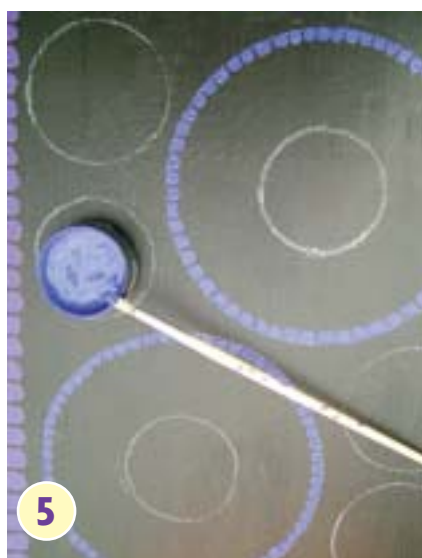
3

WITH the artist's brush, paint a line of "tiles" around the outer edge of the tabletop with Resene Blue Diamond.



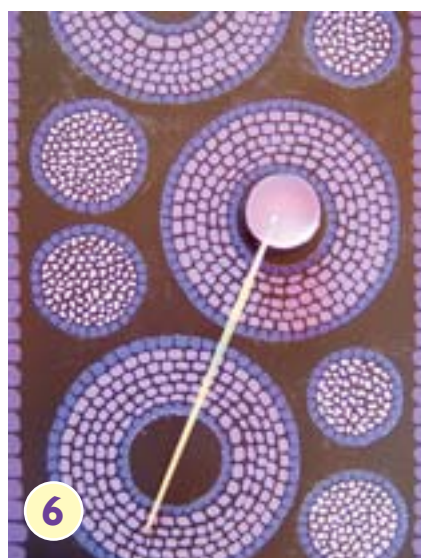
4

DRAW around saucepan lids, bowls and glasses with the chalk to create a pattern of different-sized circles on the tabletop.



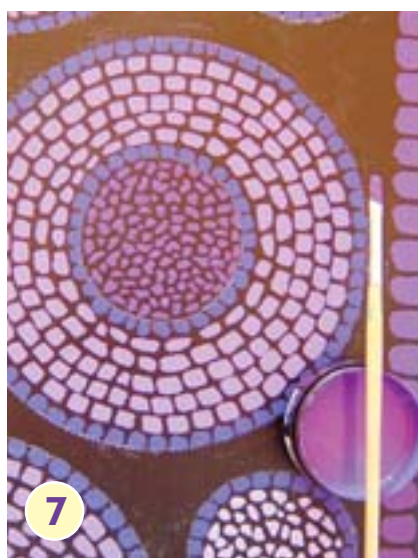
5

USING the artist's brush and Resene Blue Bell, paint a line of small "tiles" around the outer edge of the small circles and the inner and outer edges of the large circles. Allow to dry.



6

FILL in the larger circles with concentric rings of painted "tiles" using Resene Studio, as shown. Fill in the smaller circles with a random mosaic pattern using Resene Lilac Bush.



7

FILL in the centre of the larger circles with a random mosaic pattern using Resene Blue Diamond.



8

FILL in the background with a wavy painted tile pattern, as shown, using Resene Blackcurrant. Allow to dry thoroughly and apply a coat of Resene Multishield+ Gloss.