



DIY



SUCCULENT HANGER

Winter might be here, but you can still create a bright spot with a little bit of handiwork.

WORDS & PHOTOS **MARK RAYNER**

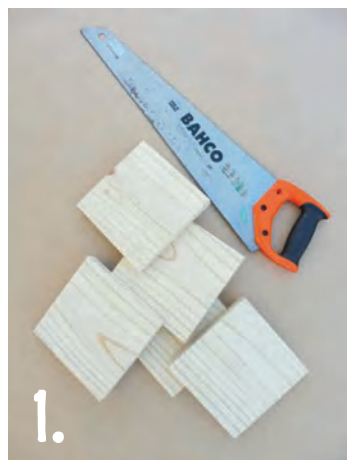
BROUGHT TO YOU BY



the paint the professionals use

You will need

- Clean cloths
- Clamp
- Curtain eyes (x 20)
- Drill with 90mm hole cutting attachment
- Egmont Magic Moss with Seaweed
- Five small succulents
- Hammer
- Knotty pine timber (approx 850mm)
 - Paintbrush
 - Pencil
 - Pliers
- Preserving jars with 90mm diameter lids
- Resene Aquaclear satin
- Resene Colorwood testpot of Resene Cherrywood
 - Rubber gloves
 - Ruler
 - Sandpaper
 - Saw
- Small chain (approx 5m)
- Small cup hooks (x4)
 - Small nail
- Small piece of wood and offcut of MDF for mixing glue
 - Tape measure
 - Two part epoxy glue



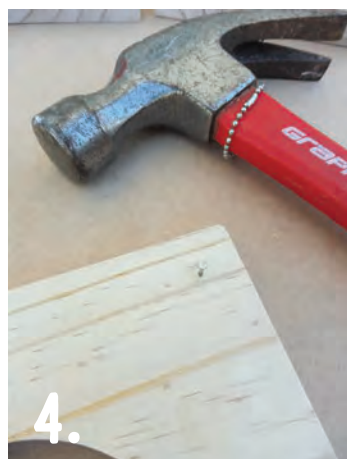
1.



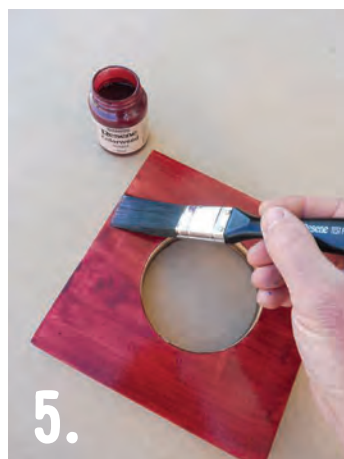
2.



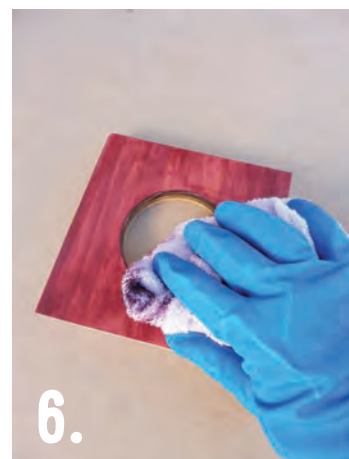
3.



4.



5.



6.



7.



8.



9.

STEP ONE

Measure, mark and cut the knotty pine into five pieces measuring 170mm x 170mm.

STEP TWO

Mark the centre of each square and cut out a 90mm hole, as shown. For safety reasons, clamp the wood firmly to a workbench while cutting each hole.

STEP THREE

Smooth any rough edges with sandpaper and wipe off any sanding dust with a clean cloth.

STEP FOUR

Place the ruler across one of the squares of wood diagonally and make a mark 20mm in from each corner. Make a small hole on each of these marks with a hammer and nail. Repeat so that four of the pieces of wood have four holes on each side and the remaining piece of wood has four holes on one side only (this piece will form the bottom layer of the hanger).

STEP FIVE

Apply one coat of Resene Cherrywood to one face of each of the squares, brushing in the direction of the grain.

STEP SIX

Allow the stain to penetrate the wood and, once the depth of colour has been achieved, remove the excess stain with a clean cloth. Repeat steps five and six until every surface of each of the squares has been stained. Allow to dry for four hours.

Resene

the paint the professionals use

For more on paints and stains phone 0800 RESENE (0800 737 363) or visit your Resene ColorShop or www.resene.co.nz

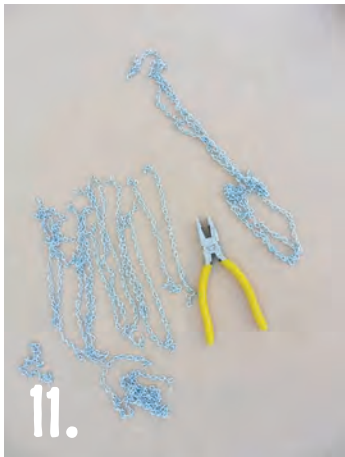


10.



12.

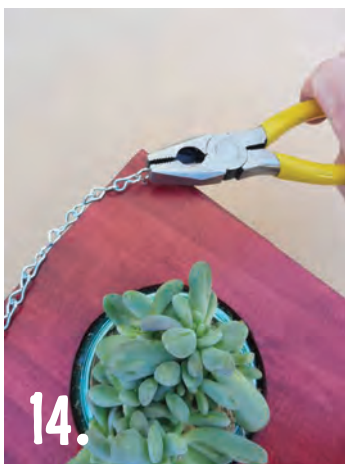
Top tip
Water the succulents as and when they need it, taking care not to overwater. When growing directly in moss like this, they may benefit from an occasional feed with appropriate fertiliser.



11.

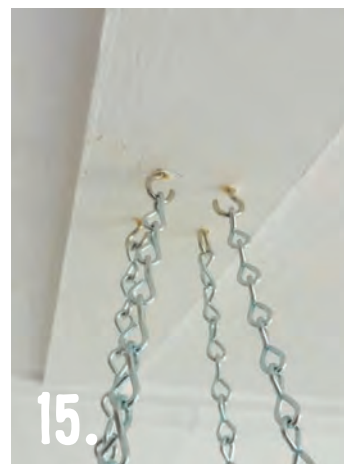


13.



14.

To get the look
Mark painted the background walls with Resene SpaceCote flat tinted to Resene Dutch White.



15.



16.

STEP SEVEN

Apply three coats of Resene Aquaclear satin to each surface of the wooden squares, allowing two hours for each coat to dry.

STEP EIGHT

Screw the curtain eyes into the holes made in step four.

STEP NINE

Remove the inner lid seals from each of the preserving jars, as shown.

STEP TEN

Mix the epoxy glue according to manufacturer's recommendations and glue the jars into the holes, as shown. Allow glue to dry.

STEP ELEVEN

Cut four 450mm lengths of chain and 16 x 200mm lengths of chain.

STEP TWELVE

Fill each jar with Egmont Magic Moss with Seaweed and make a small 'well' in the centre of each.

STEP THIRTEEN

Take the first small succulent out of its pot and carefully remove as much potting mix as you can. Place the roots of the succulent into the 'well' and then place a little more Egmont Magic Moss with Seaweed around the base of the plant. Repeat this with the other succulents.

STEP FOURTEEN

Take the top layer of the hanger and carefully open up the curtain eyes with the pliers. Loop the ends of the 450mm lengths of chain through the opened curtain eyes and then reclose with the pliers.

STEP FIFTEEN

Screw four cup hooks in a small square formation into the ceiling, as shown, and loop the other ends of the 450mm lengths of chain through these. The top layer of the hanger should now be suspended.

STEP SIXTEEN

In the same way, hang four 200mm lengths of chain through the curtain eyes on the underside on the top layer and then attach the second layer to these. Continue until all five layers are suspended.