

**NB. This chart is from the  
Resene historical file.  
Please refer to current  
Resene colour charts  
for the latest colour options**



# FLECKLE

**CONTINUOUS  
PLASTIC**

**WALL  
COATING**

**FOR PROTECTION**



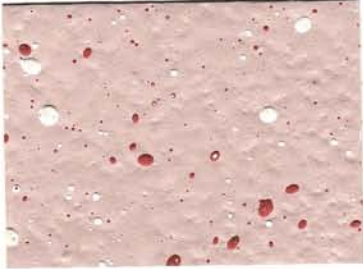
**FOR DECORATION**

*Colour Chart*

# FLECKLE

## CONTINUOUS PLASTIC WALL COATING

F 10 1-016



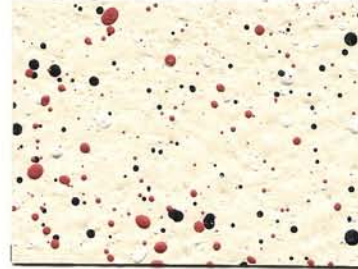
**MUSHROOM**  
SPOT: MEXICAN RED & WHITE

F 11 5-061



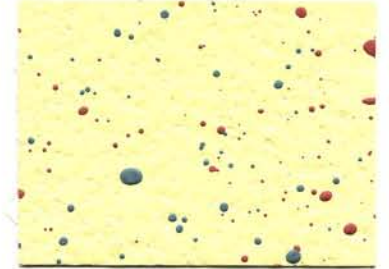
**FOREST GREEN**  
SPOT: SHADOW GREEN & WHITE

F 12



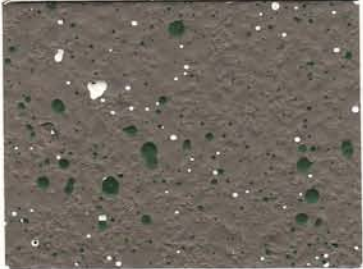
**IVORY**  
SPOT: BLACK, WHITE & MEX. RED

F.13 4-053



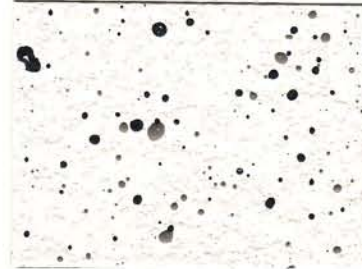
**PRIMROSE**  
SPOT: MEXICAN RED & SHADOW GREEN

F 14 3-037



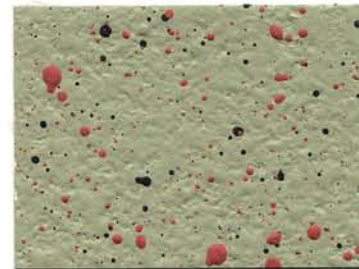
**COFFEE**  
SPOT: FOREST GREEN & WHITE

F 15



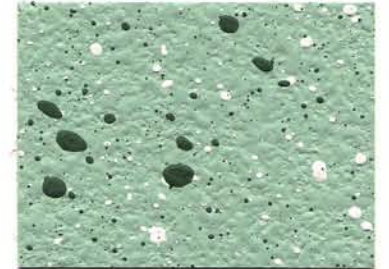
**WHITE**  
SPOT: COFFEE & BLACK

F 16 5-059



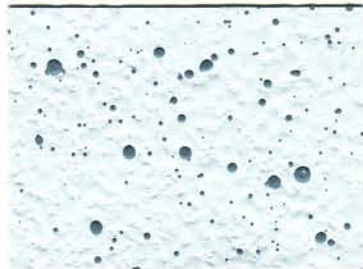
**SAGE**  
SPOT: BLACK & MEXICAN RED

F 17 7-082



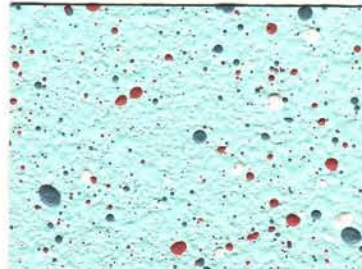
**SHADOW GREEN**  
SPOT: WHITE & FOREST GREEN

F 18



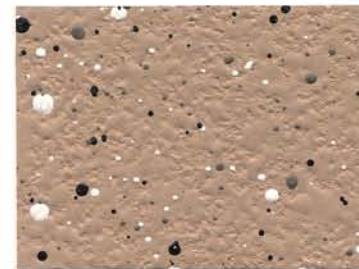
**CHINA BLUE**  
SPOT: MYSTIC BLUE

F 19



**WREN BLUE**  
SPOT: MEXICAN RED & MYSTIC BLUE

F 20



**TEAK**  
SPOT: BLACK, WHITE & COFFEE

F 21 9-094



**MIST GREY**  
SPOT: BLACK & WHITE

F 22



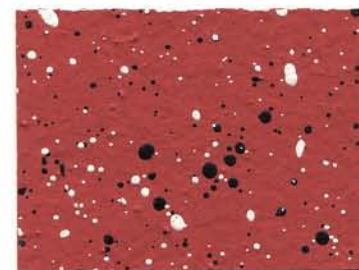
**MYSTIC BLUE**  
SPOT: WHITE

F 23



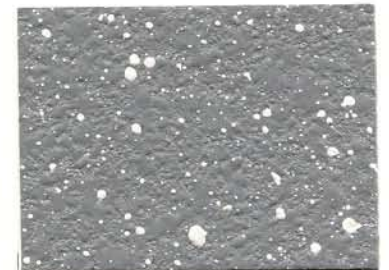
**CORAL**  
SPOT: COFFEE

F 24 1-025



**MEXICAN RED**  
SPOT: BLACK & WHITE

F 25 9-096



**SHALE**  
SPOT: WHITE



# Fleckle

## SPECIALIZED WALL COATING

FLECKLE is a highly specialized formulation suitable only for spray application. It is a heavy viscous material which gives an attractive continuous finish when applied by conventional or airless spray equipment. This base coat may be five to six times the thickness of an ordinary paint film.

FLECKLE is recommended for interior or exterior surfaces (except unprimed ferrous metal, aluminium and exterior woodwork) to provide a durable, washable, stain-resistant, decorative finish which inhibits the growth of fungi and bacteria.

Building materials which have been satisfactorily Fleckled include asbestos, cement, concrete, cement render (off the wood or steel float), concrete blocks, Pinex (softboard and hardboard), Gibraltar board and fibrous plaster.

The base coat is available in the standard colours shown and also in B.S.S. colours on request.

The final outstanding decorative effect is obtained by spraying flecks or spots or coloured Fleckle on to the base coat by means of a spotting gun. This pleasing Fleckled finish may be varied at will by using any combination of Fleckle colours. Coverage of the base coat is approximately 80 square feet per gallon.

When applying Fleckle the temperature should not be below about 50°F.

### STIPPLECOTE PRODUCTS LTD.

GOUGH STREET, SEAVIEW  
LOWER HUTT

P.O. BOX 36-006  
MOERA, LOWER HUTT