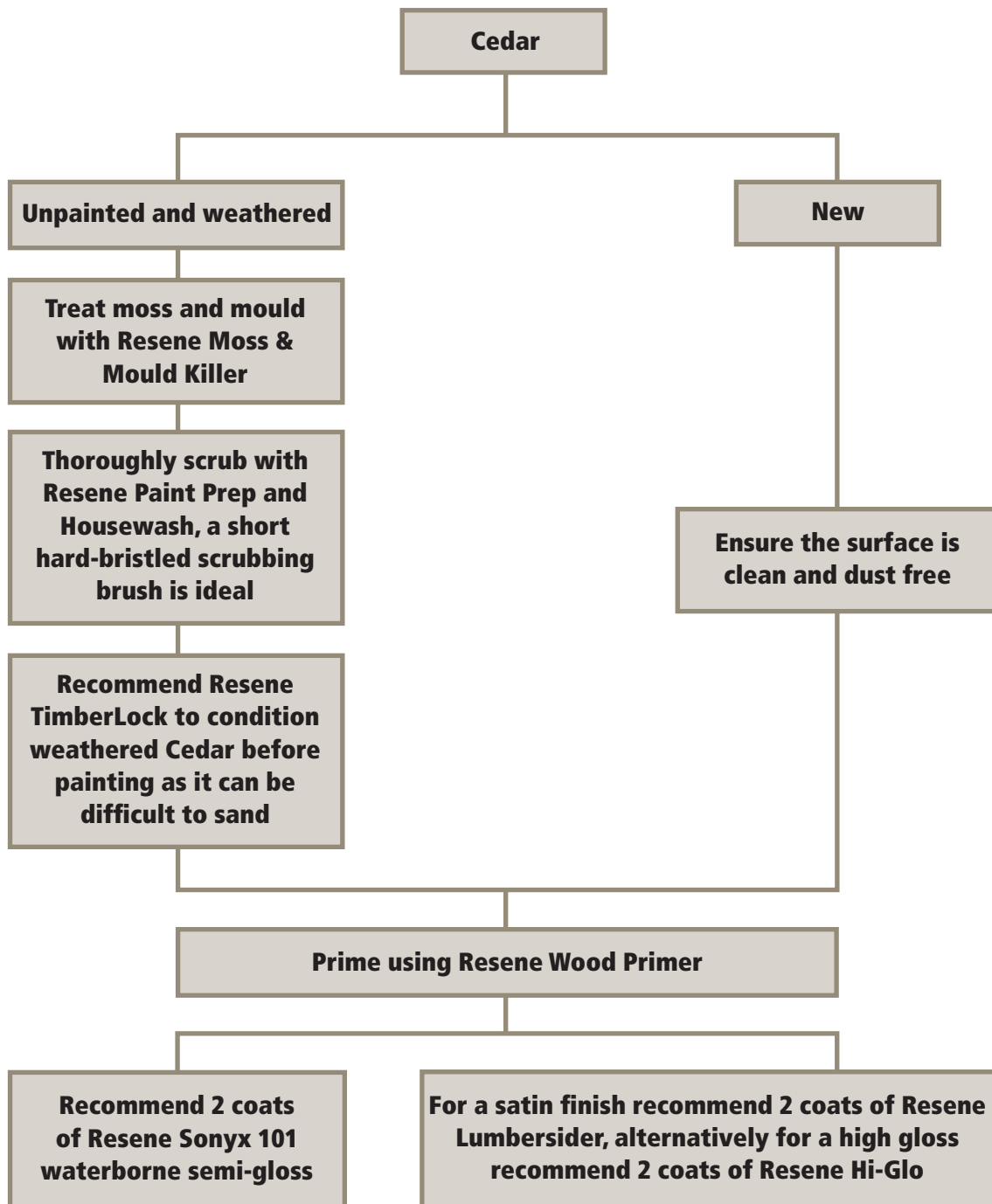




## Cedar weatherboards and timber



Also consider using



## 5. Cedar weatherboards and timber

### Notes:

- Cedar is a highly resinous timber which is also why it is so durable and able to be left to weather uncoated. However the resin will bleed through waterborne primers and paints including Resene Quick Dry (see photo). Resene Wood Primer is our only recommendation.
- Resene Waterborne Woodsman is not affected by the resin bleed and can be applied directly onto Cedar. Conditioning with Resene TimberLock, while a good idea before priming will **not** prevent the stain from leaching through Resene Quick Dry Primer.
- However, surface forming wood stains should be avoided however as the top layer of Cedar degrades quickly under U.V. attack resulting in the stain flaking off. Refer to Resene Help line if asked for a paint system to redo flaking stains on Cedar.
- Redwood is part of the same family as Cedar and while it is much less common for new or recently constructed homes it presents the same issues when painted.
- Cedar is a comparatively soft timber (more so than pine) and is easily damaged by waterblasting. Our only recommendation is to scrub or wash with Resene Paint Prep and Housewash.
- Aged grey Cedar can be painted but should first be conditioned with Resene TimberLock before priming and painting. Typically Cedar weatherboards are not smooth sawn and are difficult to sand and prepare. Resene TimberLock should be viewed as an alternative to sanding where the surface or texture of the timber makes it impractical.
- Flathead nails (including copper nails) are often used and left exposed rather than punched and filled and are simply primed and painted at the same time as the weatherboards.
- Cedar is easily painted and is an excellent substrate for paint (more so than pine for example) once painted repainting is straightforward the only real consideration is that any bare areas need to be spot primed with Resene Wood Primer rather than Resene Quick Dry.
- Resene Sonyx 101 or Resene Lumbersider suit Cedar more so than the high gloss Resene Hi-Glo due to the surface texture of the timber particularly quarter sawn boards. If repainting refer to flowcharts 2 and 3 and prime or spot prime with Resene Wood Primer.



### Key accessories

- Resene Moss & Mould Killer
- Resene Paint Prep and Housewash
- A good quality brush is recommended
  - 75-83mm Legend brush for men
  - 63-75mm Legend brush for women
- Contract filler for any cracks or nailheads
- Paint pot to decant into if using 10 litre pails

### Add ons

- Drop sheets
- Resene Hot Weather Additive for hot dry conditions
- Painter dusting brush
- Turps for Resene Wood Primer/Resene TimberLock
- Painter's gloves (good for sanding and painting)
- Resene MoulDefender