

# one bedroom four looks

The bedroom is a very personal space. It's a place of rest, relaxation and romance, and a room that probably reveals more about who we are as individuals than any other room in the house.

That's why, when it comes to decorating or redesigning your bedroom, it makes sense to create an environment that reflects your personality and provides an appealing and inviting retreat.

A focal point of any bedroom is the bed itself. And by combining bed linen, throws, pillows and a handful of accessories, it's easy to create a mood and tone that suits your individual style.

To help inspire you, we've created four distinct bedroom looks. Each uses the same basic elements: a native rimu, queen-size platform flexi-slat base and matching single-drawer bedside tables from the Design Mobel Player range.



picture: courtesy of TRANZ



## dramatic

Black and white creates a dramatic contrast in the bedroom, and it's a colour combination that provides the perfect base for your own personal touches. Kept simple, a monochromatic scheme has a modern, sophisticated look; but it can also be softened with warm neutral shades, or brightened with bold tones such as red, lime, orange or fuchsia.

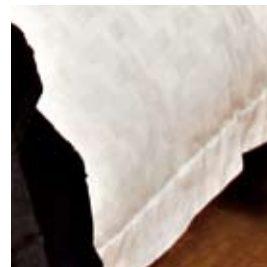
In this bedroom, the white duvet cover, with a basket-weave pattern and matching Euro pillows, is accented with a black sheet and standard pillows. On top of these are a 45cm x 45cm square cushion and a 30cm x 50cm breakfast cushion. This layering of different-sized pillows in alternating black and white adds depth and interest to the bed setting. A black faux-mink throw anchors the end of the bed and balances out the black top sheet.

To match the strong statement made by the black and white linen, the bed features solid block legs and an extended headboard. Accessories on the bedside tables continue the black-and-white theme and include a picture frame, and a stack of black and white towels. A vase of pink summer lilies and an ornamental fuchsia elephant liven up the room with a bold splash of colour.




Bed: Player with block leg and matching bedside tables, Design Mobil 0800 337 446 [www.designmobil.co.nz](http://www.designmobil.co.nz)

Resene Caffeine 



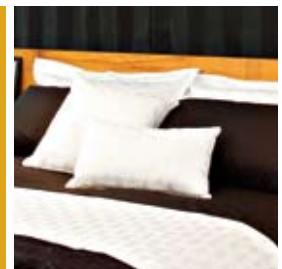
Duvet cover: Dolce set from the Domani Range, Icon Home Ltd 09 574 3200

Resene Quarter Spanish White 

Cushions: Domani Dolce, Icon Home Ltd

Polycotton sheet and pillowcases: Design Plus, Icon Home Ltd

Resene Dixie Chick 



Faux mink blanket: H&I, Icon Home Ltd

Turkish cotton ribbed towels: MK Pure, Icon Home Ltd

Curtain: Collingwood (in Nero) from the Belle range, Icon Home Ltd

Elephant, black picture frame and sequined heart and star: Redcurrent Auckland, Hamilton, Hawkes Bay, Wellington, Christchurch [www.redcurrentathome.co.nz](http://www.redcurrentathome.co.nz)


Resene Tea 

Three-photo picture frame: Ezibuy 0508 500 500 [www.ezibuy.co.nz](http://www.ezibuy.co.nz)

Flowers: Vida Flores 09 523 5454

Resene Popstar 



Resene Soul 



## modern romantic

Many women dream of creating a romantic, feminine décor in the bedroom, but it's not always a look that appeals to the guys. However, romantic doesn't have to mean frilly, flouncy bed linen and heart-shaped pillows in pink and white satin. It's possible to achieve a subtle romantic feel with a more understated palette and simple accessories, which won't scare away the boys.

This setting uses earthy tones of moss and milk chocolate, teamed with a pure-cotton percale duvet set in a fresh paisley design, with matching pillowcases. A subtle feminine detail is introduced through the embroidered cuff on the walnut sheet set. The reversible moss-coloured quilt has soft pure silk on one side and textured cotton velvet on the other. It is paired with matching rectangular cushions. Texture and visual interest is introduced in the spiral patterns embroidered on the pillows and quilt.

Although layered for a soft, luxurious feel, the pillows at the head of the bed are grouped in an ordered fashion. They are intentionally kept to smaller proportions so as not to overpower the standard panel headboard.

Feminine touches on the bedside tables include a small white ornamental birdcage with a curved top, which complements the pattern on the duvet. A vase of cream stock and a bottle of bath salts add texture and interest to the other bedside table.

The result is a rich, inviting bedroom with an upmarket romantic feel that appeals to both genders.




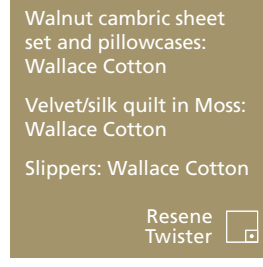
Bed: Player with plinth leg and matching bedside tables,  
Design Mobil  
0800 337 446  
[www.designmobil.co.nz](http://www.designmobil.co.nz)

Resene  
Palm Sugar 



Serenade paisley duvet set and pillow cases:  
Wallace Cotton  
0800 222 122  
[www.wallacecotton.co.nz](http://www.wallacecotton.co.nz)

Resene  
Pearl Lusta 

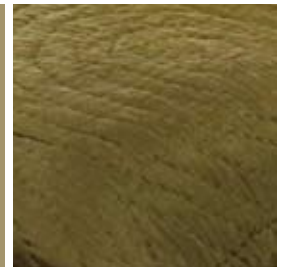


Walnut cambric sheet set and pillowcases:  
Wallace Cotton

Velvet/silk quilt in Moss:  
Wallace Cotton

Slippers: Wallace Cotton

Resene  
Twister 




Book: Redcurrent  
Auckland, Hamilton,  
Hawkes Bay, Wellington,  
Christchurch  
[www.redcurrentathome.co.nz](http://www.redcurrentathome.co.nz)

Resene  
Sanctuary 



Bottled bath salts:  
Mor Cosmetics  
[www.morcosmetics.com](http://www.morcosmetics.com)

Flowers: Vida Flores  
09 523 5454

Resene  
Joanna 



Resene  
Milk Chocolate 



## minimalist masculine

When it comes to the bedroom, most men would happily dispense with frills, flounces and fluffiness in favour of a more understated, fuss-free style. Mountains of pillows on a four-poster bed swathed in fabric are enough to give most guys nightmares.

This Zen-inspired bedroom design has a certain simplicity that appeals to the male psyche. With its clean, uncluttered lines, it is at once uncomplicated and minimalist, but with a calming, restful atmosphere.


Two pillows lie flat at the head of the bed, accentuating its dimensions. The champagne quilt, in a light, silk-look polyester, is stitched with a strong grid design. Fitting snugly on the bed, it covers the mattress, but doesn't obscure the warm tones of the rimu bed base. The bed's continuous metal leg provides a modern touch with a very masculine edge.

A linear element is introduced in the form of a striped chenille curtain behind the bed. The white pure cotton sheets and matching pillowcases feature a pintuck detail and four stitched lines in shades of champagne, caramel, bronze and chocolate, to subtly complement the quilt.

While incorporating the same simple styling as the bed linen, accessories on the bedside tables feature curved forms to offset the strong linear elements in the rest of the room. An unadorned round glass vase holds a fruit-salad leaf, and a pair of clear glass candleholders sit on the other table. The only floral accents in the room are two scented, carved wooden flowers with a definite masculine feel.




Bed: Player with continuous leg and matching bedside tables, Design Mobil  
0800 337 446  
[www.designmobil.co.nz](http://www.designmobil.co.nz)

Resene Haystack 




Pure-cotton Seville sheet and pillowcase set with embroidery and pintuck detail: Ezibuy  
0508 500 500  
[www.ezibuy.co.nz](http://www.ezibuy.co.nz)

Resene Albescent White 

Savoy quilted bed cover in champagne: Ezibuy

Candlesticks: Valencia glass candle holders: Ezibuy

Resene Melting Moment 



Belle Brooklyn Charcoal Ready to hang curtain: Icon Home Ltd  
09 574 3200

Resene Maxwell Smart 

Wooden scented flowers: Redcurrent  
[www.redcurrentathome.co.nz](http://www.redcurrentathome.co.nz)

Flowers: Vida Flores  
09 523 5454

Resene High Country 



Resene Afficionado 



## clean and contemporary

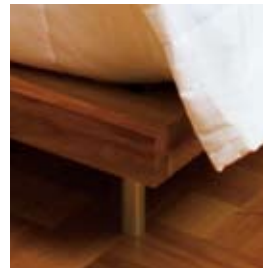
Crisp white sheets give a bed the luxurious feel of a five-star hotel. They're inviting and expensive-looking, and an ideal basic element to which you can add your own personal touches.

White bed linen can also be accessorised to suit the season. In summer or spring, add fresh shades of citrus, lime and aqua; during autumn and winter, warm up the white with bronze, plum or chocolate accents.


This bed setting takes the clean, contemporary look of white bed linen and gives it an elegant and contemporary twist, thanks to a subtle silver theme. The sheet and matching pillowcases feature a delicate Art Déco-inspired motif in silver stitching on the cuff. The same square, self-coloured pattern is repeated in the matching duvet.

Quilted square-shaped Euro pillows, propped up against the extended headboard and teamed with white Oxford pillows, create an opulent layered look. The most eye-catching item on the bed is a rectangular white cushion with a silver peacock on the front. This decorative piece adds interest to the all-white colour scheme and introduces a shiny texture that offsets the matte finish of the white bed linen. The cylindrical steel bed legs continue the silver theme.

Blue-toned accessories were selected for the bedside tables, to complement the white-and-silver theme. These include a set of three cylindrical candle holders, a sapphire-blue glass vase holding an arrangement of proteas, a white picture frame and two wooden candlesticks with a distressed-white Resene Paint Effects finish. **H**



Bed: Player with cylinder leg, extended headboard and matching bedside tables, Design Mobil  
0800 337 446  
[www.designmobil.co.nz](http://www.designmobil.co.nz)

Resene Urbane 



White Deco duvet and silver Deco sheet set: Thread Design  
09 302 1710

Resene Tonto 

Quilted Euro pillowcases, white Oxford pillowcases: Thread Design

White and silver peacock cushion: Thread Design

Resene Half Sea Fog 



Blue Cathedral candleholder set: Ezibuy  
0508 500 500  
[www.ezibuy.co.nz](http://www.ezibuy.co.nz)

Resene Ashanti 

Roma wooden candleholders and scented candles: Ezibuy

Flowers: Vida Flores  
09 523 5454

Resene Night Moves 



Resene Indian Ink 