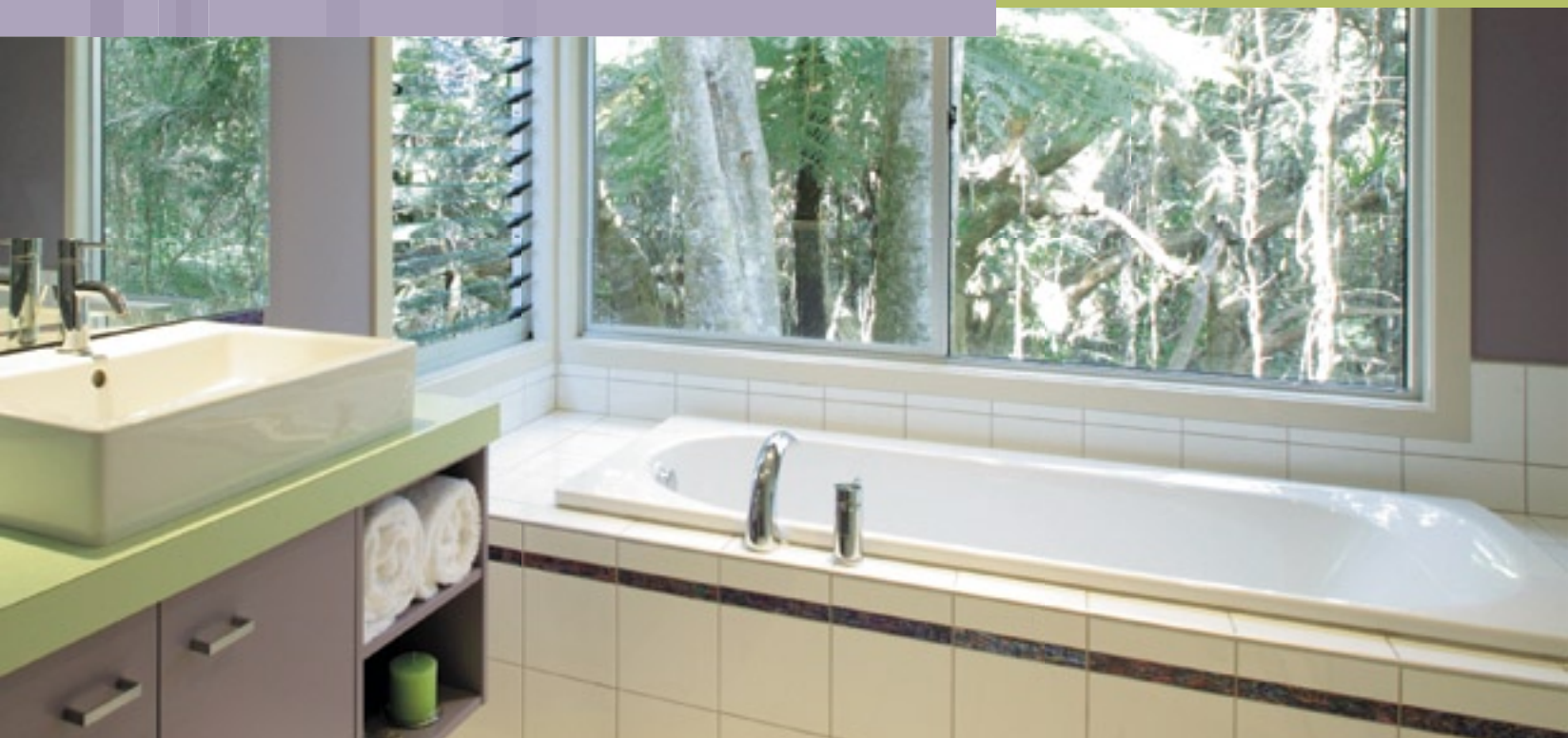


bathing

among the trees



Sue Reidy finds out about planning a bathroom for little girls.

This children's bathroom is one of three in a new house owned by Michelle and her partner, Rob. The home is located on Auckland's North Shore, set in two acres of dense native bush. Designed by architect Carolyn Smith from Collective Architecture, it was completed in January this year.

The children's bathroom is on the ground floor, with big picture windows and louvres taking advantage of the trees surrounding the house. The rich greens of the puriris, nikaus and tree ferns enhance the enjoyment of daily bath time.

"Our two girls just love having a bubble bath among the trees. They watch the birds on the branches while they are in the tub," says Michelle. "We wanted a bathroom that was easy-care, with fittings that were suitable for two small girls – hence the open shower and the large bath area. At the same time, we also wanted to keep in mind that in the not-too-distant future they would be two teenage girls with a different set of needs. A generous shower area, and plenty of cupboard and drawer space, were priorities, as were the large vanity top and mirror area. A separate toilet was also an essential."

The pinky-purple and lime colours of the bathroom echo those in the girls' bedrooms.

Get inspired for your bathroom makeover at www.kohler.co.nz or www.clearlite.co.nz.

Consider using a Gib Dry Zone® solution when revamping your bathroom, for added protection against moisture damage. See www.gib.co.nz for more information.

“Carolyn and I wanted to establish a visual connection between the rooms,” explains Michelle. “The children’s bathroom and bedrooms gave us the chance to have some fun with colour.”

Despite the intense shades on the walls, the bathroom retains a light, airy feel. The colour scheme of purple, green and white is crisp and clean, with paua decorative feature tiles introducing the purple into the walls, breaking up the expanse of white.

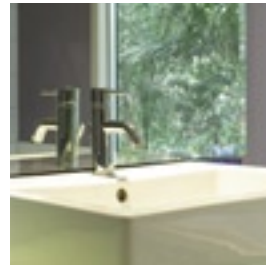
The children’s bathroom and bedrooms gave us the chance to have some fun with colour

Michelle did all the project management, and chose all the fixtures and fittings herself.

“It’s not for the faint-hearted,” she admits. “I’d never been involved in building a new house before and had no idea what I was getting myself into. It was a very steep learning curve. The process of having the house designed, built and finished took two years. It was long and hard, despite having a fantastic team working on it. However, at the end of the day, we’re thrilled with the results and we enjoy living in the space.” **H**



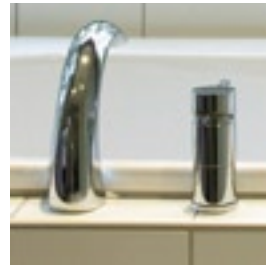
Architects: Carolyn Smith and Helena Mayo, Collective Architecture
 Builder: Greg Gunderson Builders
 Resene Wasabi



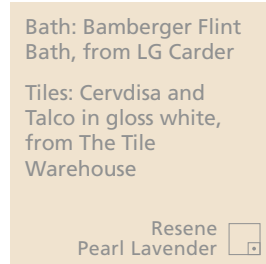
Tapware and shower slide: Painsi Cox, from LG Carder
 Vanity basin: Vero, from LG Carder
 Resene Chalk Lavender



Cabinetry: Pat Gavin Kitchens
 Benchtop: Melteca Lime Natural
 Resene Misty Lavender



Get this look on your walls with Resene Zylone SpaceCote low sheen waterborne enamel, tinted to Resene Amethyst Smoke.
 Resene Amethyst Smoke



Bath: Bamberger Flint Bath, from LG Carder
 Tiles: Cervdisa and Talco in gloss white, from The Tile Warehouse
 Resene Pearl Lavender

