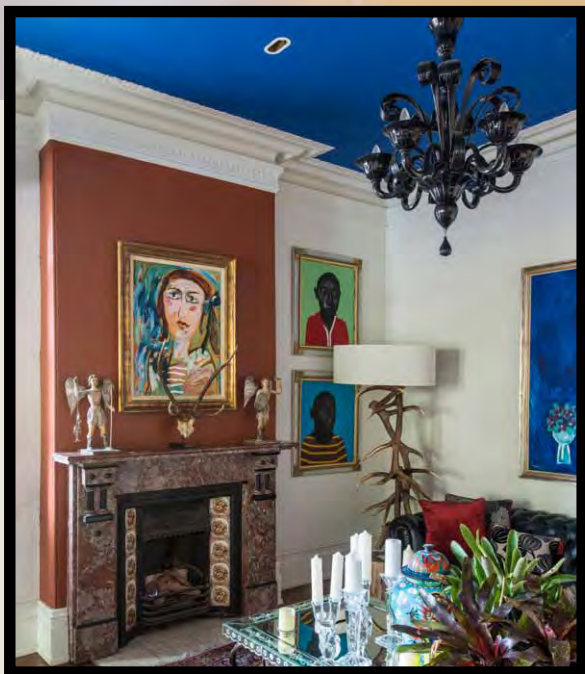


getting theatrical

While a glamorous heritage theatre took out the grand prize, an equally theatrical home was also honoured.



Left A Residential Interior Colour Creativity award was given to Kelly Gammie of Eucalyptus Design & Interiors for her renovation of an Art Deco house. This bathroom uses Resene Fuscous Grey, Resene Black White, Resene Half Sisal, Resene Triple Sisal, Resene Escape and Resene Aluminium.

Below Terry Hogg of Lick Light+Colour won the Residential Interior award for this Australian home, which used a rich palette of colours including Resene Decadence for the living room ceiling and Resene Desperado for this fireplace. For more, see our full house feature on page 20.

 Resene Fuscous Grey

Theatrical use of Resene colour was certainly highlighted in this year's Resene Total Colour Awards, announced recently. Not only did Oakley Gray Architects win the top award for their work on the Regent Theatre in Dunedin but a house full of dramatic jewel-like colour by Australian-based Terry Hogg of Lick Light+Colour won the top **Residential Interior** award.

In fact, this eye-catching home was chosen by *habitat* magazine some months ago as the lead feature house in this issue, so turn to page 20 to see more of this remarkable home.

As the judges commented: "This project exemplifies an atmospheric palette. Careful consideration has been given to the art on the walls... Colours are highlighted by architectural structures. The entire house has been treated as a work of art – it's a visual feast. It inspires and creates a sublime palette, indulgent yet still with elements of

surprise. The red hall entrance closes you in and creates a statement and sense of anticipation the moment you arrive.”

Second overall place, recipient of the **Nightingale Colour Maestro** award, and the winner of the **Residential Exterior** section was Andrew Banks of Studio Pacific Architecture for the Newtown Park Apartments in Wellington. Tonal colour schemes and perforated screen panels transformed the exterior.

The judges wholeheartedly agreed that this project was completely delightful. “Appropriate to the environment with a nice sense of strength, variation and graphical quality. The impact of line and form has been highlighted with colour, another means of identifying spaces. The colour gives solidity to the building and shows the power that colour can add.”

A **Residential Interior Colour Creativity** award was given to Kelly Gammie of Eucalyptus Design & Interiors for her creative renovation of an Art Deco house.

> Resene
Black White

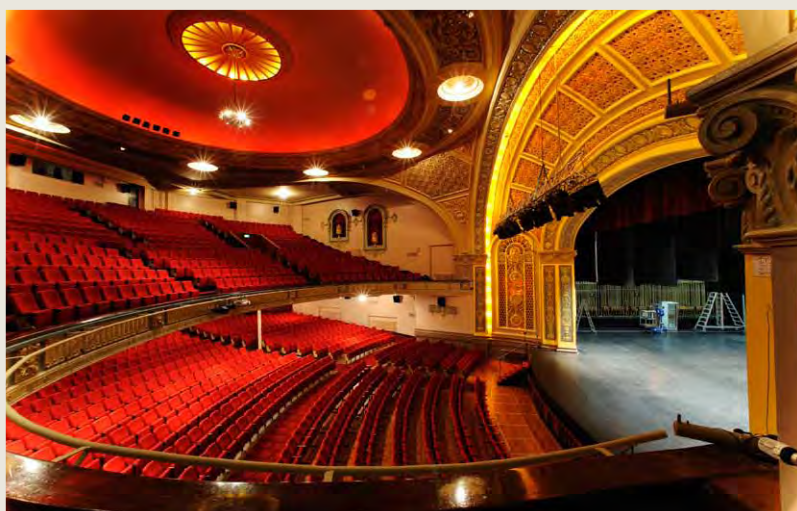
Resene
Buff

and the winner is ...

The overall winner, recipient of the **Resene Total Colour Master Nightingale** award, and winner of the Heritage section was Peter Porteous of Oakley Gray Architects for the Regent Theatre in Dunedin.

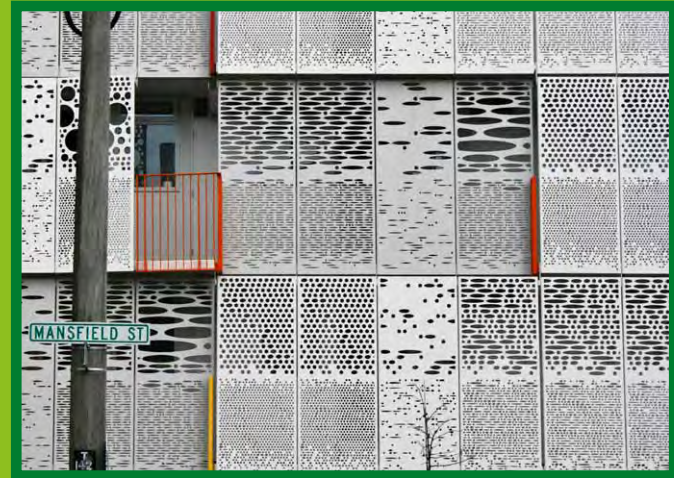
As the judges commented: “This project is exciting because it captures the history and role of the building – Victorian excess captured in 1928. It has been supported with a very good start from the architecture, adding a sense of lushness, opulence and theatrical atmosphere through an extensive array of hues. The colours chosen highlight and embrace the clever use of lighting with complete attention to detail. So traditional yet still surprising. This project simply stands out; it showcases a big night out, celebrating and indulgent. A completely clever use of colour.”

Multiple colours were used including Resene Buff, Resene Cashmere, Resene Tradewind, Resene Opium, Resene Tom Tom, Resene Viola, Resene Gold, Resene Tsunami, Resene Vin Rouge and Resene Silver.





Second overall place, recipient of the Nightingale Colour Maestro award, and the winner of the Residential Exterior section was Andrew Banks of Studio Pacific Architecture for Newtown Park Apartments. He used individual tonal schemes for the various buildings in the complex, including accents of Resene Whizz Bang, Resene Dynamite, Resene Flame Red and Resene Equator (shown below), and Resene Lickety Split, Resene Christi, Resene Sulu, Resene Japanese Laurel and Resene Mantis (left).



The judges commented that “this project demonstrates an innovative and contrived approach; incredibly clever. The colour concept was a unique way to decorate the space on a very limited budget. The colours are placed in such a way that the walls become the artwork.”

A **Heritage Colour Maestro** was won by Peter Reed of Salmond Reed Architects for the 120-year-old Allendale House in Auckland.

The judges commented: “Incredibly thoughtful, this colour palette is not punchy or overwhelming, it’s just completely appropriate. It has moved the building forward with respect. The respect applied makes you treasure it more as a reflection of times gone by. Neo-Georgian with a Victorian undertone, coloured with complete sensitivity for enjoyment today.”

A **Lifetime Achievement** award was given to interior designer and tutor Nanette Cameron. Nanette’s name is familiar to the thousands of Aucklanders with a passion for art, design and architecture. During its 40-year history the Nanette Cameron School of Interior Design has instilled an understanding and appreciation of design and colour in more than 4000 students. [H](#)



A Heritage Colour Maestro award was won by Peter Reed of Salmond Reed Architects for Allendale House in Auckland. It uses Resene Quarter Oilskin walls, Resene Silver Chalice on the turret, Resene Half Rakaia mouldings, Resene Black White trims and Resene Blast Grey on the fence.