

Black book

New and notable
announcements from
across the industry.

When only waterborne will do

Looking for an interior broadwall sealer that can stand up to wet areas without the strong solvent odours associated with traditional solventborne products? New Resene Waterborne Sureseal is a pigmented penetrating sealer designed to ready a wide range of interior surfaces for topcoating, including old varnishes and Lockwood® finishes, is also suitable for use in bathrooms and kitchens. It has excellent adhesion, reduces bleeding of water stains, is low VOC and dries without the unwanted odour of traditional solventborne products. Specify it on your next project on baked enamels, glass/ceramics, fibre cement, glazed surfaces, plasterboard in wet areas, solid plaster, tiles, varnished surfaces or to seal plasterboard prior to wallpapering.

www.resene.com/waterborne-sureseal



Pick of the crop

The inspiration for The Big Apple Project was seeded from a mural off Market Street in Hastings, which prominently features a large red apple at its centre. From there, it grew into an idea for celebrating the people behind the biggest apple growing region in New Zealand – Hawke’s Bay District. Members of the local art community took on the challenge of painting 20 unique large apple sculptures with Resene products. Throughout August and September, the apples were displayed at various locations around Hawke’s Bay before going up for auction at the end of October.

Project creator, manager and curator Mauricio Benega says that the first year was a success and he hopes to make it an annual event for the Hawke’s Bay region. In the future, he would like to see it turn into a national contest, where artists across the country can apply to paint an apple and art lovers and collectors from all over New Zealand can bid on the auction. “The positive feedback we had on this project from the community was overwhelming. Almost everyone that you talk to in the area visited the Apple Trail or followed the apples online through social media. A big thank you to all our sponsors, the apple growers and the artists. We could not make this project successful without their support and talents.”

www.thebigapple.co.nz



Participating artists

Gillian Appleby
Brandon Blair
Jo Blogg
Richard Boyd-Dunlop
Glen Colechin
Mickey Espino
Tony Harrington
Helen Kerridge
Justin Kite
Elisa Koski-Taylor
Josh Lancaster
Isobel Loughran
Abbey Merson
The Pasifika Senikau Group
John Staniford
Ricks Terstappen and Sharleen Gamble
Patrick Tyman
Katharine White
Heather Wilson
Bernie Winkels



Fan favourite

If you've ever hand-coloured your renders, chances are you'll love Resene Wallpaper Collection 539325 – a retro, fan design with the same charming 'overlap' you get from colouring with copic markers. Incorporate it as part of a contemporary scheme by pairing it with chic black and white furniture in Resene Black White and Resene All Black balanced with accents in pale and deep green-edged blues like Resene Timeless and Resene Time Traveller.

www.resene.com/wallpaper



A taste of what's to come

The latest edition of *habitat plus – decorating and colour trends* is out now, and it's bigger and better than ever. You'll find it brimming with ideas to incorporate today's most popular paint colours, woods stains and wallpapers in your next project. Browse the major themes, motifs and hues that are dominating the decorating world now and heading our way soon. Pick up a copy at your local Resene ColorShop or reseller or view the digital version online.

www.resene.com/trendsbook



Slumber sanctuaries

In a chaotic world, bedroom design has become about creating havens where clients can rest and recuperate. But since what makes a haven can differ greatly from person to person, it can be hard for them to know what they want until they see it. The new *habitat plus – bedrooms* book is a great place to start, and it's full of beautiful ideas to get clients dreaming about what their own inner sanctum could be. Grab a copy or two from your local Resene ColorShop or reseller or peruse it online now.

www.resene.com/bedroombook



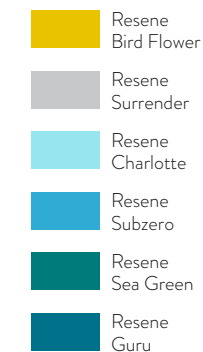
above: *Mataora* by Charlotte Grieve, Joseph McCreedy and Erin Philips features Resene Surrender on the outside and a gradient interior in Resene Charlotte, Resene Subzero, Resene Sea Green, Resene Guru, Resene Bird Flower and Resene Lemon Ginger. Image by Joe Hockley, www.joehockley.co.nz.

Front row seats

Those out enjoying the fresh spring weather on Takutai Square in Auckland's Britomart precinct were given the pleasure of enjoying a rest on some epic benches. The Brick Bay Nohonga 2022 winning projects were on display for the public to interact with before being moved to Brick Bay Sculpture Trail in time for summer.

This was the second time the competition took place, which is a collaboration between Brick Bay, Britomart, Resene and the Auckland Branch of the New Zealand Institute of Landscape Architects Tuia Pito Ora that challenges students and all levels of graduate landscape architects to design and construct creative nohonga (seats) for the people of Tamaki Makaurau to enjoy. Congratulations to all the winning teams on their creative and colourful projects.

www.brickbaysculpture.co.nz





All a flutter

Many of Resene's best-selling wallpaper designs are conversational, meaning they are peppered with quirky details that tend to get people talking. These types of wallpaper are an excellent option for both restaurants and bathrooms, as they offer patrons a talking point to break the ice. The exotic birds that characterise Resene Wallpaper Collection 539431 will definitely create some chatter, and yet, its refined colour palette and elegant watercolour-like style makes it just as suitable for more formal spaces. Pair it with adjacent walls in a modest cream like Resene Creme De La Creme, furnishings in a verdigris like Resene Green Acres and add glittering accents in Resene Rose Gold metallic.

www.resene.com/wallpaper

Resene
Rose Gold

Resene
Green Acres



Resene
Creme De La Creme

Master Painters announces 2022 Apprentice of the Year

The Master Painters New Zealand annual Apprentice of the Year competition, which is proudly sponsored by Resene, often involves a charitable element. But this year, for the first time ever, the four finalists were each tasked with redecorating a room to freshen up the Marlborough Hospice. The competition started with a trip to the Resene ColorShop in Blenheim to pick up all the tools and paint required for their project. The surface preparation was all done by hand so as not to disturb the other hospice residents and four different Resene paints in a range of finishes from gloss to flat were applied so that the finalists could really show off their skills. Judging took place throughout the two and a half days the apprentices worked to finish their rooms, and it was a very tight competition with only a single point separating the winner from the runner-up. In the end, it was Dunedin's Ashley Harris from Sims & Blue Painters and Decorators who came out on top and was named the 2022 Apprentice of the Year.

Congratulations to Ashley and to Christine Scott-Dick from Brent Pickworth Precision Painters (Motueka/Marlborough), Keisha Waitiri-White from Hamish Simpson Decorating (Gisborne) and Tommy Wilson from Silver Fern Painting (Wellington) for making it to the finals.



left: Ashley Harris shows off her award alongside Moana and Raymond Beveridge of Martin Beveridge Ltd, the winners of Master Painter of the Year.

Resene Quarter
Albescent White

Resene
Kina Brown

right: 2022 Master Painters New Zealand Apprentice of the Year Ashley Harris applies Resene SpaceCote Low Sheen tinted to Resene Quarter Albescent White to a room in the Marlborough Hospice to complement her already painted doors and trims in Resene Enamacryl gloss waterborne enamel tinted to Resene Kina Brown and tongue-and-groove paneling in Resene Lustacryl semi-gloss waterborne enamel tinted to Resene Kina Brown.

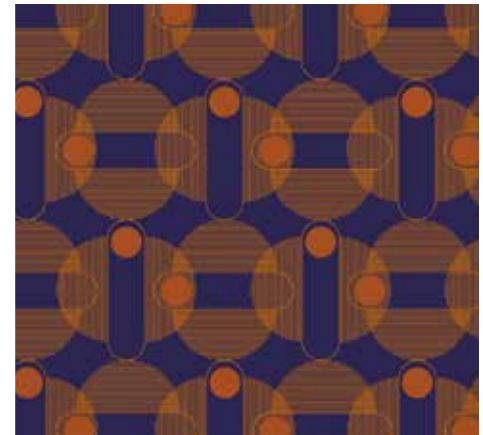




Start the season off right with *habitat* issue 37

As the weather gets warmer, clients are thinking more and more about how they can make the most of the outside of their homes. The latest issue of *habitat by Resene* is available now, and it's packed with ideas for transforming exterior spaces. Those building a new home or renovating their interior will also find plenty of tips for bringing earthy appeal indoors. Plus, get inspired by garage, workshop and porch transformations and find some great paint projects to keep the kids busy during school holidays. If you haven't received one by mail, pick up one in-store at your local Resene ColorShop or selected resellers or read it online.

www.resene.com/habitat



On a roll

The second Resene Wallpaper Design Competition has come to a close. This year saw another amazing selection of designs submitted, and with so much originality and creativity to choose from, the judges had their work cut out for them. Congratulations to all of the winners, whose wallpapers will be made into Resene WallPrint custom wallpaper in partnership with Aspiring Walls and will take home a share of more than \$7,000 in prizes.

Winner 'Shells' by Valerie Khoo (featuring Resene Eighth Parchment, Resene Castle Rock, Resene Licorice and Resene Neutral Bay)

Runner Up 'Floral Mural' by Kate Heeks-Purell (featuring Resene Black White and Resene Bokara Grey)

Runner Up 'Echoing' by Isabella Green (featuring Resene Vindaloo, Resene Paua and Resene Malarkey)

Want to create your own wallpaper? Upload an image or design into Resene WallPrint, choose your wall size and get your design printed into strips of wallpaper that are ready to hang. It's an ideal way to add customised personality to retail and hospitality spaces, commercial offices, residential homes and more.

www.resene.com/wallprint



Timber trends

There are few more desirable trends in the architecture and design world than timber, and the ideas for incorporating it into projects both inside and out are virtually limitless. For fresh inspiration and to learn more about the Resene products and colours to use to enhance and protect your wood finishes to keep them looking great for the long haul, check out the new *habitat plus - wood stains* book. Find copies at your local Resene ColorShop or reseller or read it online.

www.resene.com/woodbook